



## The New York State School Report Card [2014 - 15]

**NAME:** BEDFORD CSD

**BEDS Code:** 660102060000

**ADDRESS:** 632 S BEDFORD RD, BEDFORD, NY 10506

**PHONE:** (914) 241-6010

**The New York State Report Card is an important part of the Board of Regents' effort to raise learning standards for all students. It provides information to the public on school/district enrollment and staff, student performance, and other measures of school and district performance. Knowledge gained from the report card on a school's or district's strengths and weaknesses can be used to improve instruction and services to students.**

## BEDFORD CSD Enrollment (2014 - 15)

**K-12 Enrollment: 4,315**

These enrollment data are collected as part of NYSED's Student Information Repository System (SIRS). These counts are as of "BEDS Day" which is typically the first Wednesday in October. Available are enrollment counts for public and charter school students by various demographics for the 2014 - 15 school year. For nonpublic school enrollment data please see the [Non-Public School Enrollment and Staff](#) information on our Information and Reporting Services webpage

### Students by Gender

Male		Female	
2,254	52%	2,061	48%

### Students by Ethnicity

American Indian or Alaska Native	Black or African American	Hispanic or Latino	Asian or Native Hawaiian/Other Pacific Islander	White	Multiracial
1	139	1,254	191	2,624	106
0%	3%	29%	4%	61%	2%

### Other Groups

Limited English Proficient Students		Students with Disabilities		Economically Disadvantaged Students	
498	12%	479	11%	1,126	26%

### Students by Grade

Pre-K (Half Day)	Pre-K (Full Day)	Kindergarten (Full Day)	1st Grade	2nd Grade	3rd Grade
28	31	280	307	310	321
4th Grade	5th Grade	6th Grade	Ungraded Elementary	7th Grade	8th Grade
313	336	297	41	332	332
9th Grade	10th Grade	11th Grade	12th Grade	Ungraded Secondary	
364	361	364	299	58	

## Average Class Size (2014 - 15)

Common Branch			
20			
Grade 8 English	Grade 8 Mathematics	Grade 8 Science	Grade 8 Social Studies
21	19	21	21
Grade 10 English	Grade 10 Mathematics	Grade 10 Science	Grade 10 Social Studies
21	24	21	21

## High School Completers (2014 - 15)

Results by Student Group	Completers (Graduates + IEP Diplomas)	Graduates (Regents + Local Diplomas)	Regents Diploma		Regents with Advanced Designation	
	Number of Students	Number of Students	Number of Students	Percent of Graduates	Number of Students	Percent of Graduates
All Students	303	295	279	95%	134	45%
General Education	273	273	270	99%	134	49%
Students with Disabilities	30	22	9	41%	0	0%

Results by Student Group	Regents with CTE Endorsement		Local Diplomas		Commencement Credentials	
	Number of Students	Percent of Graduates	Number of Students	Percent of Graduates	Number of Students	Percent of Completers
All Students	8	3%	16	5%	8	3%
General Education	7	3%	3	1%	0	0%
Students with Disabilities	1	5%	13	59%	8	27%

High School Non-completers (2014 - 15)

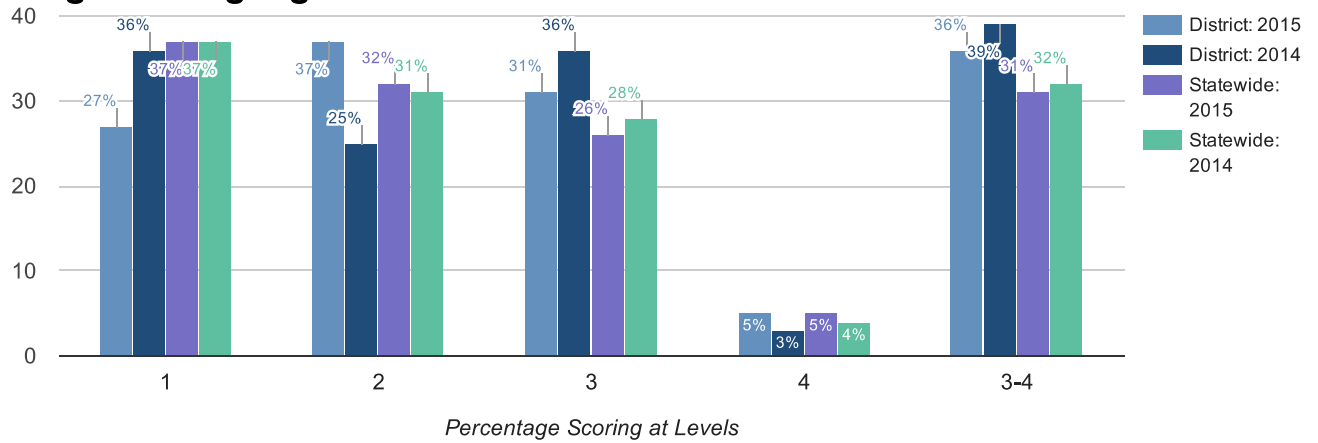
Results by Student Group	Dropped Out		Entered Approved High School Equivalency Preparation Program		Total Noncompleters	
	Number of Students	Percent of Students	Number of Students	Percent of Students	Number of Students	Percent of Students
All Students	8	1%	24	2%	32	2%
General Education	—	—	—	—	—	—
Students with Disabilities	—	—	—	—	—	—

## Post-graduation Plans of Completers (2014 - 15)

Results by Student Group	To Four-Year College		To Two-Year College		To Other Post-Secondary		To the Military	
	Number of Students	Percent of Completers	Number of Students	Percent of Completers	Number of Students	Percent of Completers	Number of Students	Percent of Completers
<b>All Students</b>	225	74%	48	16%	1	0%	3	1%
<b>General Education</b>	218	80%	40	15%	1	0%	3	1%
<b>Students with Disabilities</b>	7	23%	8	27%	0	0%	0	0%

Results by Student Group	To Employment		To Adult Services		To Other Known Plans		Plan Unknown	
	Number of Students	Percent of Completers	Number of Students	Percent of Completers	Number of Students	Percent of Completers	Number of Students	Percent of Completers
<b>All Students</b>	7	2%	0	0%	7	2%	12	4%
<b>General Education</b>	4	1%	0	0%	2	1%	5	2%
<b>Students with Disabilities</b>	3	10%	0	0%	5	17%	7	23%

## Grade 3 English Language Arts

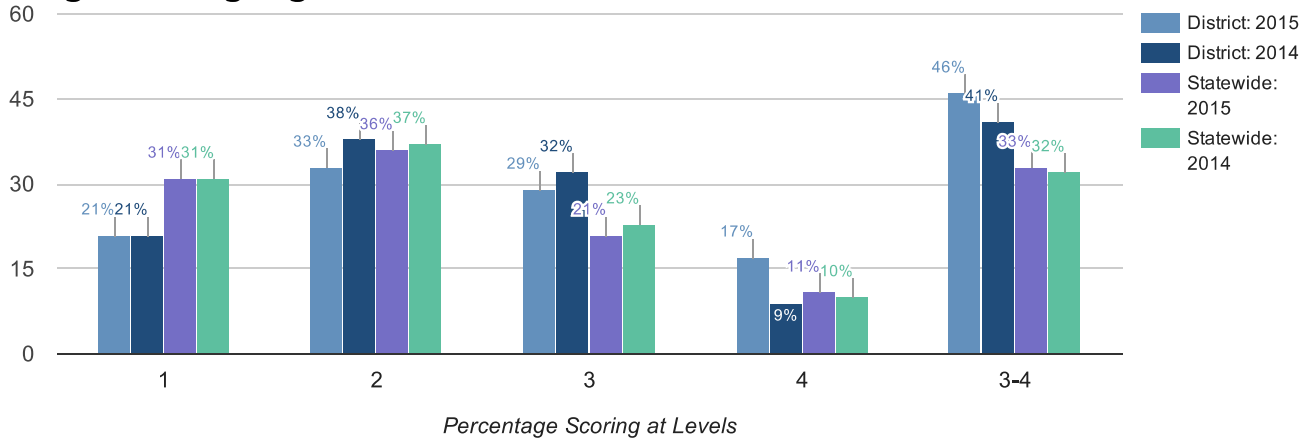


### Mean Score

2015	2014
305	300

Results by Student Group	2015						2014					
	Total Tested	Percent Scoring at Level(s)				% Proficient (Levels 3 and 4)	Total Tested	Percent Scoring at Level(s)				% Proficient (Levels 3 and 4)
		1	2	3	4			1	2	3	4	
All Students	302	27	37	31	5	36	304	36	25	36	3	39
General Education	276	23	38	34	5	39	271	31	27	38	4	42
Students with Disabilities	26	73	27	0	0	0	33	73	15	12	0	12
Asian or Native Hawaiian/Other Pacific Islander	10	40	30	20	10	30	15	20	40	40	0	40
Black or African American	3	—	—	—	—	—	10	40	20	30	10	40
Hispanic or Latino	93	49	41	9	1	10	98	62	23	13	1	14
White	188	16	35	44	6	49	169	23	25	47	5	52
Multiracial	8	—	—	—	—	—	12	17	33	50	0	50
Small Group Total	11	18	45	27	9	36	0	0	0	0	0	0
Female	144	22	37	36	5	41	145	32	25	39	3	43
Male	158	32	37	27	4	32	159	39	26	32	3	35
English Proficient	261	21	38	36	5	41	273	30	27	39	4	42
Limited English Proficient	41	68	27	5	0	5	31	84	10	6	0	6
Economically Disadvantaged	89	55	34	11	0	11	80	69	21	10	0	10
Not Economically Disadvantaged	213	15	38	40	7	46	224	24	27	45	4	49
Not Migrant	302	27	37	31	5	36	304	36	25	36	3	39

## Grade 4 English Language Arts

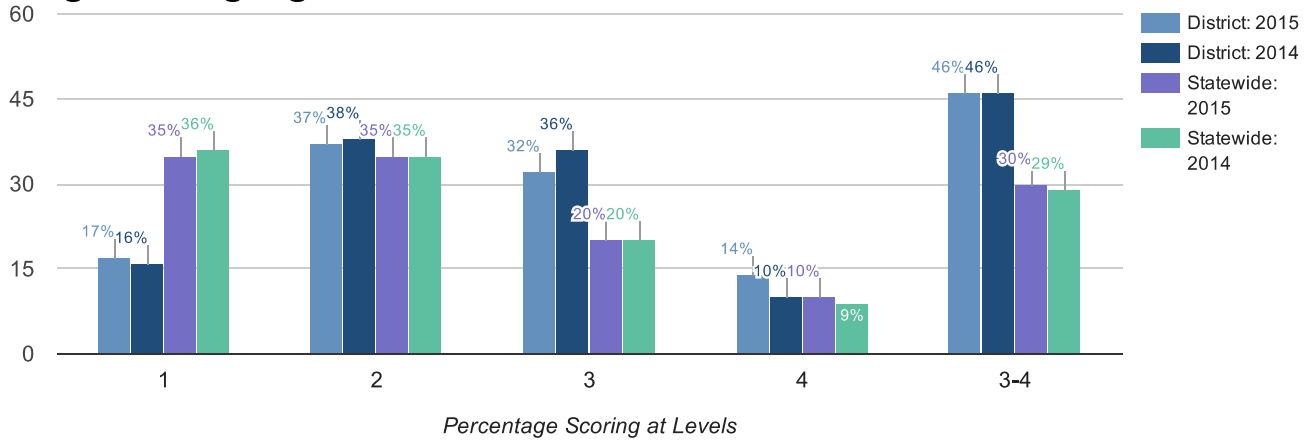


### Mean Score

2015	2014
309	306

Results by Student Group	2015						2014					
	Total Tested	Percent Scoring at Level(s)				% Proficient (Levels 3 and 4)	Total Tested	Percent Scoring at Level(s)				% Proficient (Levels 3 and 4)
		1	2	3	4			1	2	3	4	
All Students	299	21	33	29	17	46	335	21	38	32	9	41
General Education	269	16	33	33	18	51	301	15	40	36	10	46
Students with Disabilities	30	67	30	0	3	3	34	76	21	0	3	3
Asian or Native Hawaiian/Other Pacific Islander	15	13	33	47	7	53	8	13	50	25	13	38
Black or African American	9	44	33	11	11	22	8	38	50	0	13	13
Hispanic or Latino	103	45	42	11	3	14	89	52	35	13	0	13
White	161	6	28	40	26	66	214	8	38	42	12	54
Multiracial	11	0	27	45	27	73	16	19	38	25	19	44
Female	139	16	30	30	24	54	154	19	36	36	9	45
Male	160	25	36	29	11	39	181	23	39	29	9	38
English Proficient	270	14	35	33	19	51	303	14	41	35	10	46
Limited English Proficient	29	83	17	0	0	0	32	94	6	0	0	0
Economically Disadvantaged	83	58	35	6	1	7	88	51	36	10	2	13
Not Economically Disadvantaged	216	6	32	38	23	61	247	11	38	40	12	51
Not Migrant	299	21	33	29	17	46	335	21	38	32	9	41

## Grade 5 English Language Arts



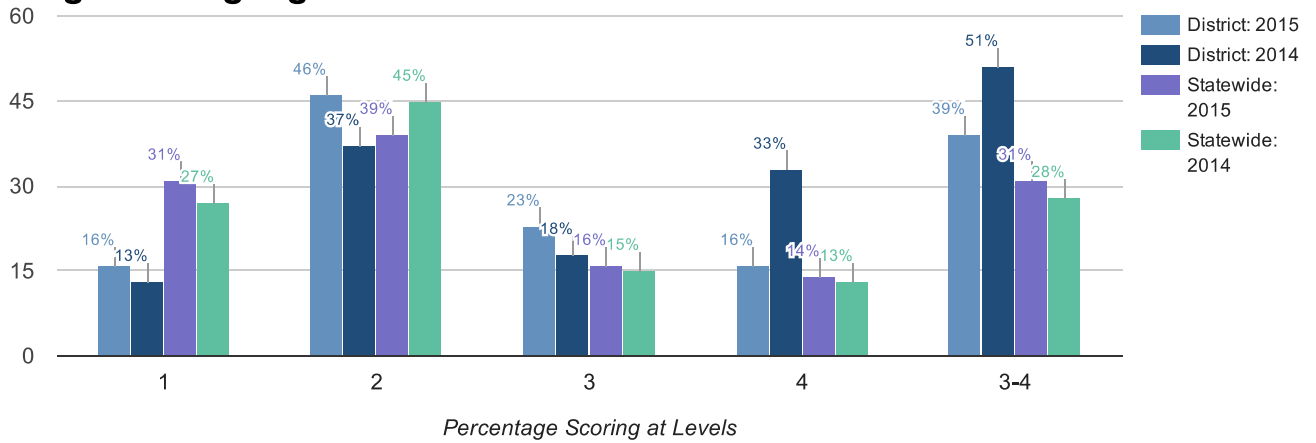
### Mean Score

2015	2014
311	311

Results by Student Group	2015						2014					
	Total Tested	Percent Scoring at Level(s)				% Proficient (Levels 3 and 4)	Total Tested	Percent Scoring at Level(s)				% Proficient (Levels 3 and 4)
		1	2	3	4			1	2	3	4	
All Students	319	17	37	32	14	46	308	16	38	36	10	46
General Education	282	9	39	37	16	52	282	11	39	39	11	50
Students with Disabilities	37	73	24	0	3	3	26	73	23	4	0	4
Asian or Native Hawaiian/Other Pacific Islander	8	13	25	50	13	63	18	11	33	56	0	56
Black or African American	8	38	25	25	13	38	9	56	33	11	0	11
Hispanic or Latino	85	44	35	18	4	21	78	28	49	21	3	23
White	204	5	39	38	18	56	194	10	36	40	14	54
Multiracial	14	14	29	36	21	57	9	11	0	89	0	89
Female	146	10	39	37	14	51	166	12	37	39	12	51
Male	173	22	35	28	14	43	142	21	39	33	7	40
English Proficient	292	10	39	35	15	51	289	13	38	39	10	49
Limited English Proficient	27	85	15	0	0	0	19	68	32	0	0	0
Economically Disadvantaged	80	44	36	15	5	20	67	37	46	16	0	16
Not Economically Disadvantaged	239	8	37	38	17	55	241	10	35	42	12	54
Not Migrant	319	17	37	32	14	46	308	16	38	36	10	46



## Grade 6 English Language Arts

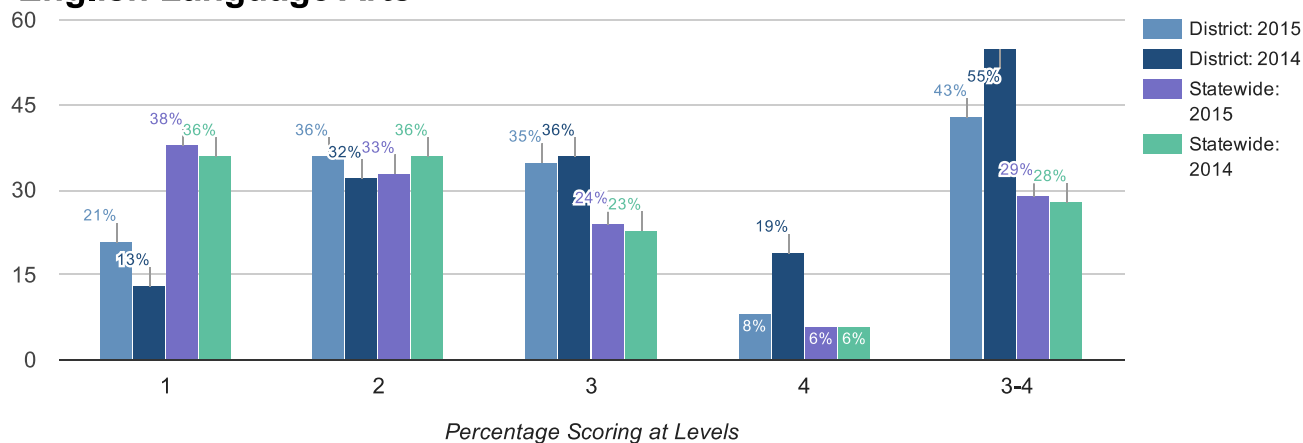


### Mean Score

2015	2014
308	319

Results by Student Group	2015						2014					
	Total Tested	Percent Scoring at Level(s)				% Proficient (Levels 3 and 4)	Total Tested	Percent Scoring at Level(s)				% Proficient (Levels 3 and 4)
		1	2	3	4			1	2	3	4	
All Students	274	16	46	23	16	39	320	13	37	18	33	51
General Education	253	11	47	24	17	42	294	9	36	19	36	55
Students with Disabilities	21	67	29	5	0	5	26	58	42	0	0	0
Asian or Native Hawaiian/Other Pacific Islander	16	6	44	19	31	50	12	0	17	33	50	83
Black or African American	8	50	50	0	0	0	16	19	38	13	31	44
Hispanic or Latino	64	31	39	19	11	30	77	34	48	12	6	18
White	177	10	49	24	18	41	202	6	33	19	42	61
Multiracial	9	11	22	56	11	67	13	0	38	23	38	62
Female	140	11	44	26	20	46	151	8	42	19	32	50
Male	134	21	48	19	12	31	169	17	32	17	34	51
English Proficient	260	13	47	23	17	40	302	10	37	18	35	53
Limited English Proficient	14	64	29	7	0	7	18	61	28	11	0	11
Economically Disadvantaged	56	34	46	16	4	20	72	32	49	11	8	19
Not Economically Disadvantaged	218	11	45	24	19	44	248	7	33	19	40	60
Not Migrant	274	16	46	23	16	39	320	13	37	18	33	51

## Grade 7 English Language Arts

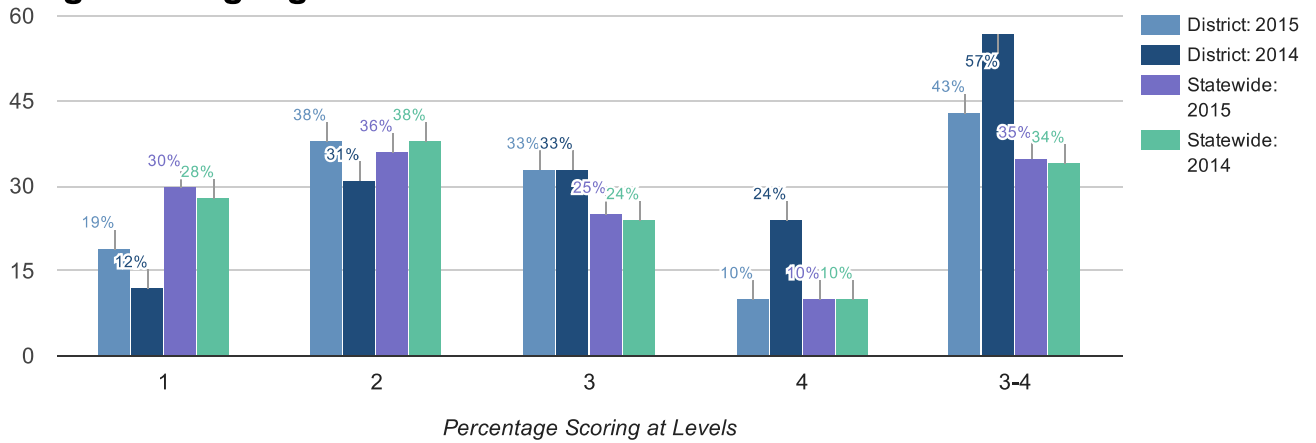


### Mean Score

2015	2014
306	318

Results by Student Group	2015						2014					
	Total Tested	Percent Scoring at Level(s)				% Proficient (Levels 3 and 4)	Total Tested	Percent Scoring at Level(s)				% Proficient (Levels 3 and 4)
		1	2	3	4			1	2	3	4	
All Students	279	21	36	35	8	43	327	13	32	36	19	55
General Education	258	17	36	38	8	46	303	9	32	39	20	59
Students with Disabilities	21	67	33	0	0	0	24	54	38	8	0	8
Asian or Native Hawaiian/Other Pacific Islander	11	0	45	45	9	55	11	0	18	18	64	82
Black or African American	14	36	29	36	0	36	10	20	40	40	0	40
Hispanic or Latino	69	45	45	10	0	10	79	27	46	23	5	28
White	174	12	32	45	11	56	221	8	28	43	22	64
Multiracial	11	18	45	27	9	36	6	17	17	17	50	67
Female	127	19	36	38	7	45	163	7	27	39	28	66
Male	152	23	36	33	8	41	164	18	37	34	10	45
English Proficient	264	17	38	37	8	45	323	—	—	—	—	—
Limited English Proficient	15	87	13	0	0	0	4	—	—	—	—	—
Economically Disadvantaged	66	44	42	14	0	14	68	29	44	19	7	26
Not Economically Disadvantaged	213	14	34	42	10	52	259	8	29	41	22	63
Not Migrant	279	21	36	35	8	43	327	13	32	36	19	55

## Grade 8 English Language Arts

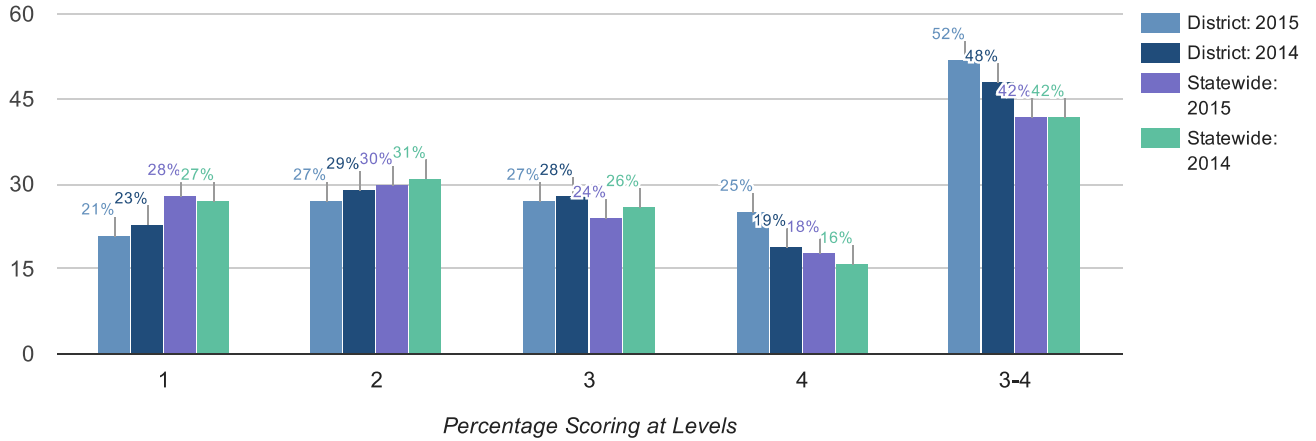


### Mean Score

2015	2014
303	319

Results by Student Group	2015						2014					
	Total Tested	Percent Scoring at Level(s)				% Proficient (Levels 3 and 4)	Total Tested	Percent Scoring at Level(s)				% Proficient (Levels 3 and 4)
		1	2	3	4			1	2	3	4	
All Students	282	19	38	33	10	43	311	12	31	33	24	57
General Education	262	15	40	35	11	45	294	9	32	34	26	60
Students with Disabilities	20	75	15	10	0	10	17	76	18	6	0	6
Asian or Native Hawaiian/Other Pacific Islander	8	13	13	38	38	75	14	14	21	43	21	64
Black or African American	11	45	36	18	0	18	13	38	31	15	15	31
Hispanic or Latino	72	35	43	21	1	22	65	32	48	14	6	20
White	185	12	38	38	12	50	209	4	26	38	31	69
Multiracial	6	0	33	33	33	67	10	10	30	50	10	60
Female	141	13	30	40	18	57	152	11	25	35	30	64
Male	141	25	47	26	2	28	159	14	36	31	19	50
English Proficient	272	16	39	34	10	44	304	11	31	34	25	58
Limited English Proficient	10	90	10	0	0	0	7	86	14	0	0	0
Economically Disadvantaged	62	40	39	18	3	21	58	43	43	10	3	14
Not Economically Disadvantaged	220	13	38	37	12	49	253	5	28	38	29	67
Not Migrant	282	19	38	33	10	43	311	12	31	33	24	57

## Grade 3 Mathematics



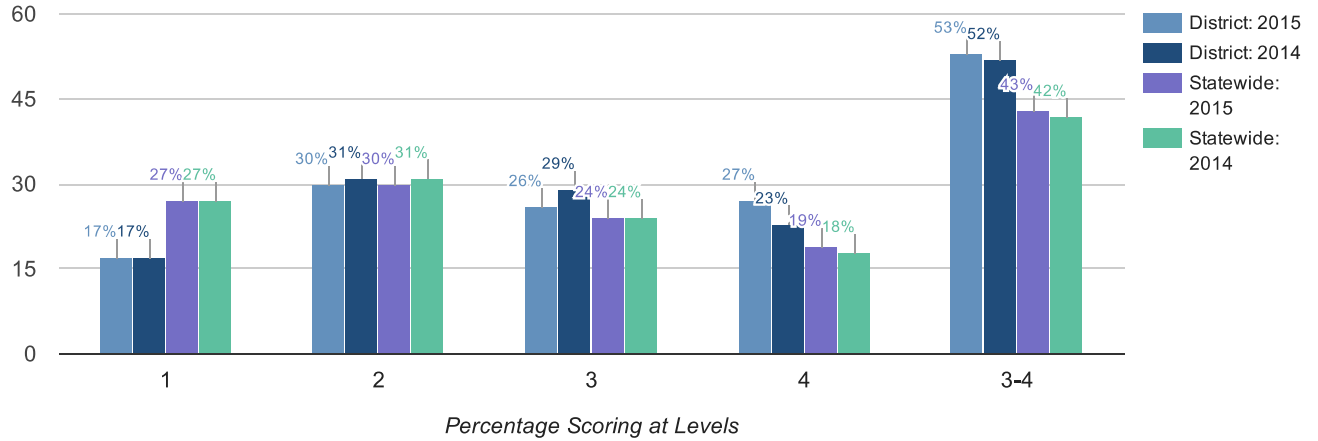
### Mean Score

2015							2014					
313							308					

Results by Student Group	2015						2014					
	Total Tested	Percent Scoring at Level(s)				% Proficient (Levels 3 and 4)	Total Tested	Percent Scoring at Level(s)				% Proficient (Levels 3 and 4)
		1	2	3	4			1	2	3	4	
All Students	305	21	27	27	25	52	307	23	29	28	19	48
General Education	279	16	28	29	26	55	275	18	31	31	21	51
Students with Disabilities	26	69	12	8	12	19	32	69	16	9	6	16
Asian or Native Hawaiian/Other Pacific Islander	10	20	10	10	60	70	15	13	33	27	27	53
Black or African American	3	—	—	—	—	—	10	30	20	20	30	50
Hispanic or Latino	96	44	34	14	8	22	101	39	43	15	4	19
White	188	10	24	34	31	65	169	15	21	38	26	64
Multiracial	8	—	—	—	—	—	12	17	33	17	33	50
Small Group Total	11	9	18	45	27	73	0	0	0	0	0	0
Female	144	21	28	28	24	51	145	20	31	29	20	49
Male	161	21	26	27	26	53	162	26	28	28	19	46
English Proficient	261	16	25	31	28	59	273	18	31	30	22	52
Limited English Proficient	44	52	36	5	7	11	34	68	18	15	0	15
Economically Disadvantaged	91	45	37	12	5	18	82	45	40	11	4	15
Not Economically Disadvantaged	214	11	22	34	33	67	225	15	25	35	25	60
Not Migrant	305	21	27	27	25	52	307	23	29	28	19	48

## Grade 4 Mathematics

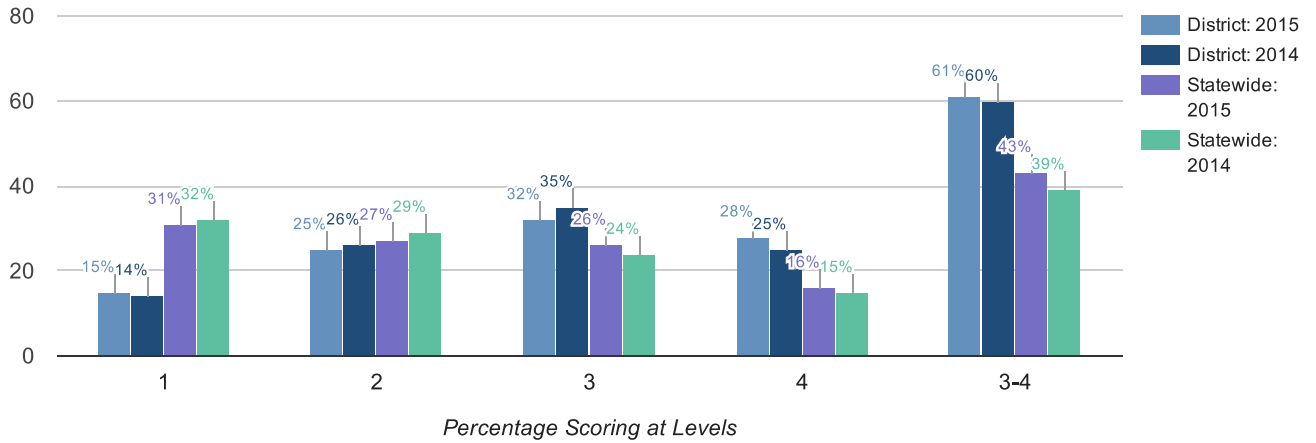


### Mean Score

2015	2014
313	312

Results by Student Group	2015						2014					
	Total Tested	Percent Scoring at Level(s)				% Proficient (Levels 3 and 4)	Total Tested	Percent Scoring at Level(s)				% Proficient (Levels 3 and 4)
		1	2	3	4			1	2	3	4	
All Students	305	17	30	26	27	53	336	17	31	29	23	52
General Education	276	12	31	28	30	57	302	11	32	32	25	57
Students with Disabilities	29	72	17	7	3	10	34	68	24	6	3	9
Asian or Native Hawaiian/Other Pacific Islander	15	7	33	33	27	60	8	13	0	50	38	88
Black or African American	8	38	25	0	38	38	8	25	50	13	13	25
Hispanic or Latino	112	32	39	21	8	29	90	43	34	13	9	22
White	159	8	25	29	38	67	214	6	29	35	29	64
Multiracial	11	0	9	36	55	91	16	6	38	44	13	56
Female	142	16	32	25	27	52	154	14	34	32	19	51
Male	163	18	28	26	28	53	182	19	28	27	26	53
English Proficient	266	9	31	28	31	59	304	9	33	33	25	58
Limited English Proficient	39	72	21	8	0	8	32	91	9	0	0	0
Economically Disadvantaged	89	43	37	15	6	20	88	41	38	14	8	22
Not Economically Disadvantaged	216	7	27	30	36	66	248	8	29	35	28	63
Not Migrant	305	17	30	26	27	53	336	17	31	29	23	52

## Grade 5 Mathematics

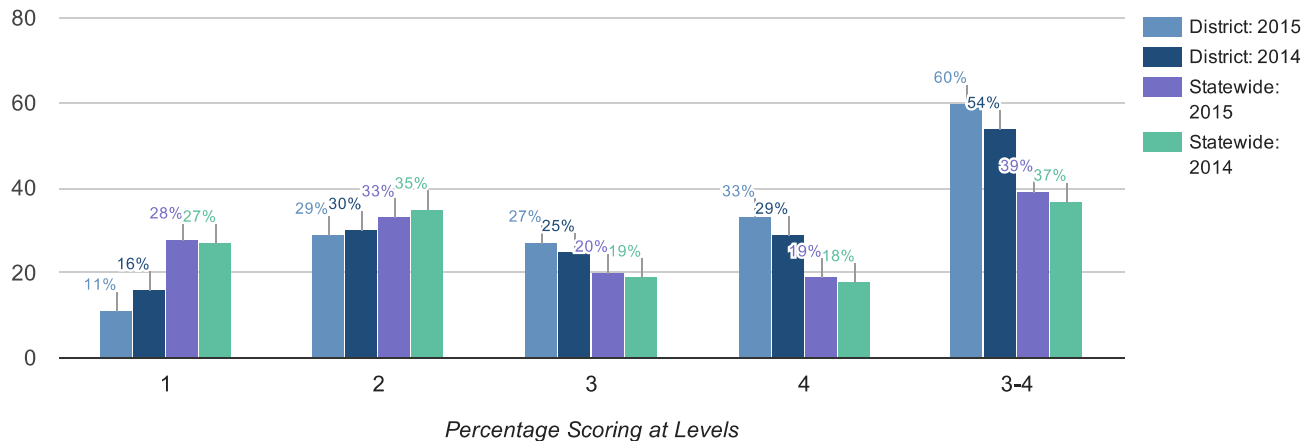


### Mean Score

2015	2014
323	322

Results by Student Group	2015						2014					
	Total Tested	Percent Scoring at Level(s)				% Proficient (Levels 3 and 4)	Total Tested	Percent Scoring at Level(s)				% Proficient (Levels 3 and 4)
		1	2	3	4			1	2	3	4	
All Students	319	15	25	32	28	61	306	14	26	35	25	60
General Education	282	8	26	35	32	67	279	10	26	38	27	65
Students with Disabilities	37	68	19	11	3	14	27	59	30	11	0	11
Asian or Native Hawaiian/Other Pacific Islander	8	13	0	38	50	88	17	12	18	29	41	71
Black or African American	7	14	71	0	14	14	9	44	44	11	0	11
Hispanic or Latino	88	36	32	18	14	32	79	22	32	35	11	47
White	202	5	22	39	34	72	192	10	24	36	29	65
Multiracial	14	14	7	43	36	79	9	0	11	56	33	89
Female	146	13	26	38	23	61	163	12	26	36	26	61
Male	173	16	24	27	33	60	143	16	26	35	23	58
English Proficient	289	9	25	35	31	66	286	12	26	37	26	63
Limited English Proficient	30	73	20	7	0	7	20	50	35	15	0	15
Economically Disadvantaged	82	35	33	20	12	32	69	28	36	30	6	36
Not Economically Disadvantaged	237	8	22	37	34	70	237	10	23	37	30	67
Not Migrant	319	15	25	32	28	61	306	14	26	35	25	60

## Grade 6 Mathematics



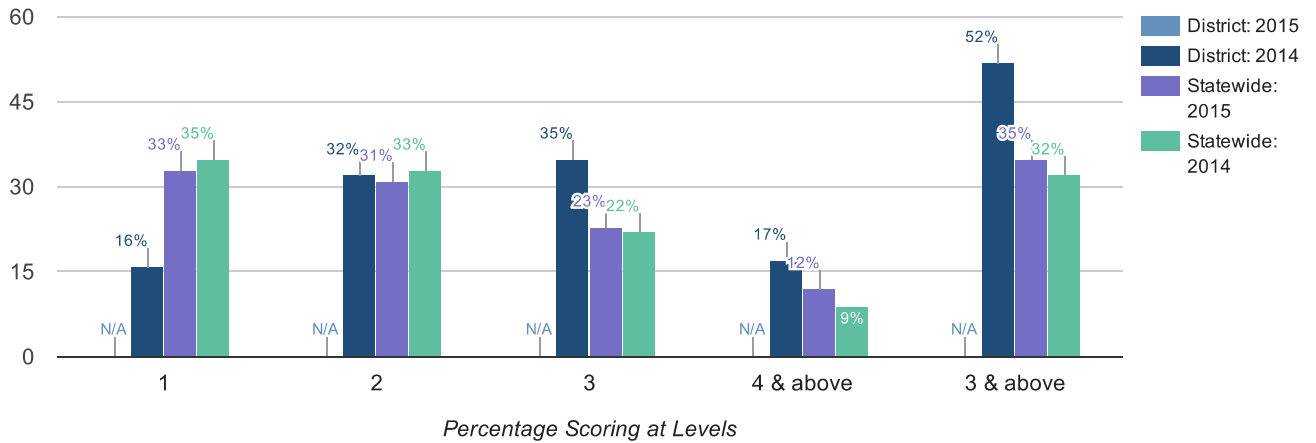
### Mean Score

2015	2014
321	318

Results by Student Group	2015						2014					
	Total Tested	Percent Scoring at Level(s)				% Proficient (Levels 3 and 4)	Total Tested	Percent Scoring at Level(s)				% Proficient (Levels 3 and 4)
		1	2	3	4			1	2	3	4	
All Students	270	11	29	27	33	60	313	16	30	25	29	54
General Education	250	8	28	28	36	64	289	12	29	27	31	58
Students with Disabilities	20	55	35	10	0	10	24	58	42	0	0	0
Asian or Native Hawaiian/Other Pacific Islander	16	6	13	19	63	81	12	0	17	17	67	83
Black or African American	6	33	67	0	0	0	16	13	56	13	19	31
Hispanic or Latino	67	27	33	27	13	40	75	36	40	16	8	24
White	172	5	28	27	40	67	197	10	25	30	35	65
Multiracial	9	0	11	56	33	89	13	15	31	23	31	54
Female	139	7	30	30	32	63	146	14	34	27	24	51
Male	131	15	27	24	34	58	167	17	26	23	33	56
English Proficient	253	8	28	28	36	64	295	12	31	26	31	57
Limited English Proficient	17	59	35	6	0	6	18	78	17	6	0	6
Economically Disadvantaged	57	32	35	19	14	33	70	34	41	17	7	24
Not Economically Disadvantaged	213	6	27	29	38	68	243	11	27	28	35	63
Not Migrant	270	11	29	27	33	60	313	16	30	25	29	54

## Grade 7 Mathematics

Mean scores and data in the table for grade 7 math include only those for grade 7 students who took the Grade 7 New York State Testing Program Assessment (NYSTP) in Mathematics. For 2015 and forward, data in the bar charts include those for grade 7 students who took the Grade 7 NYSTP in Mathematics and grade 7 students who took a Regents math test in lieu of the NYSTP. For 2014 and earlier, data in the bar charts include only those for grade 7 students who took the Grade 7 NYSTP.



### Mean Score

2015	2014
318	320

Results by Student Group	2015						2014					
	Total Tested	Percent Scoring at Level(s)				% Proficient (Levels 3 and 4)	Total Tested	Percent Scoring at Level(s)				% Proficient (Levels 3 and 4)
		1	2	3	4			1	2	3	4	
All Students	278	19	26	36	19	55	327	16	32	35	17	52
General Education	256	15	25	39	21	60	303	13	32	38	18	56
Students with Disabilities	22	59	36	5	0	5	24	58	33	4	4	8
Asian or Native Hawaiian/Other Pacific Islander	10	10	20	50	20	70	11	0	9	45	45	91
Black or African American	13	46	8	38	8	46	10	40	50	10	0	10
Hispanic or Latino	73	42	36	19	3	22	83	33	36	25	6	31
White	171	6	23	43	27	70	217	9	31	41	19	60
Multiracial	11	27	27	36	9	45	6	17	17	17	50	67
Female	126	20	32	31	17	48	164	16	29	35	20	55
Male	152	18	21	41	20	61	163	16	34	36	13	50
English Proficient	255	14	26	40	21	60	318	14	32	36	17	53
Limited English Proficient	23	74	26	0	0	0	9	78	11	11	0	11
Economically Disadvantaged	68	43	35	19	3	22	70	36	36	23	6	29
Not Economically Disadvantaged	210	11	23	42	24	66	257	11	31	39	20	59
Not Migrant	278	19	26	36	19	55	327	16	32	35	17	52



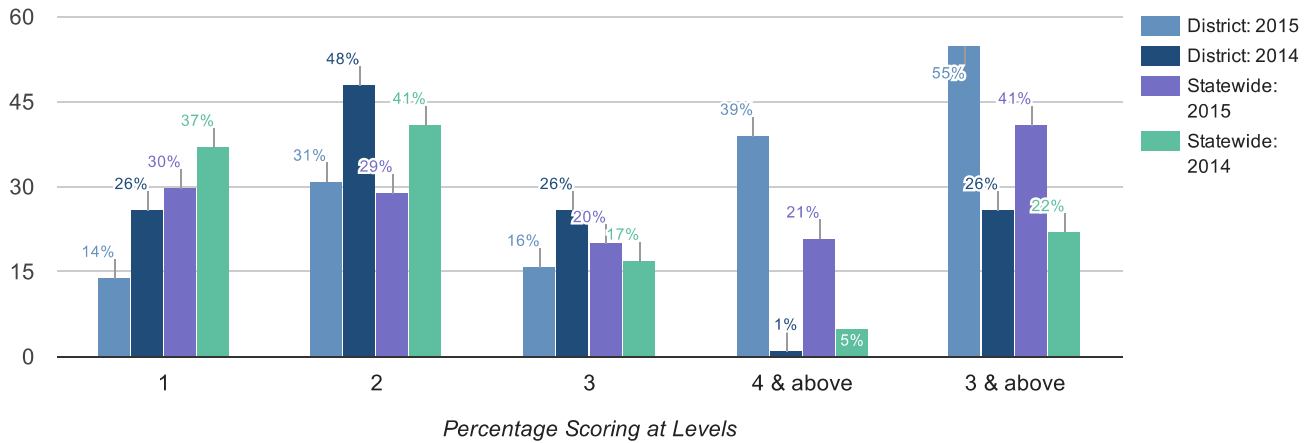
Grade 7 Students Taking a Regents Math Test

Accelerated grade 7 students who took a Regents math test in lieu of the Grade 7 NYSTP in Mathematics.

Results by Student Group	2015					
	Total Tested	Percent Scoring at Level(s)				
		1	2	3	4 & above	3 & above
All Students	3	—	—	—	—	—

## Grade 8 Mathematics

Mean scores and data in the table for grade 8 math include only those for grade 8 students who took the Grade 8 New York State Testing Program Assessment (NYSTP) in Mathematics. For 2015 and forward, data in the bar charts include those for grade 8 students who took the Grade 8 NYSTP in Mathematics and grade 8 students who took a Regents math test in lieu of the NYSTP. For 2014 and earlier, data in the bar charts include only those for grade 8 students who took the Grade 8 NYSTP.



### Mean Score

2015	2014
300	298

Results by Student Group	2015						2014					
	Total Tested	Percent Scoring at Level(s)				% Proficient (Levels 3 and 4)	Total Tested	Percent Scoring at Level(s)				% Proficient (Levels 3 and 4)
		1	2	3	4			1	2	3	4	
All Students	157	24	52	22	1	24	189	26	48	26	1	26
General Education	144	19	56	24	1	26	171	20	50	29	1	29
Students with Disabilities	13	85	15	0	0	0	18	78	22	0	0	0
Asian or Native Hawaiian/Other Pacific Islander	0	0	0	0	0	0	9	11	67	22	0	22
Black or African American	7	—	—	—	—	—	11	55	45	0	0	0
Hispanic or Latino	65	42	38	20	0	20	63	33	46	21	0	21
White	82	11	62	26	1	27	99	18	46	34	1	35
Multiracial	3	—	—	—	—	—	7	43	57	0	0	0
Small Group Total	10	20	60	10	10	20	0	0	0	0	0	0
Female	63	16	57	25	2	27	82	21	48	30	1	32
Male	94	30	49	20	1	21	107	30	48	22	0	22
English Proficient	140	16	58	25	1	26	177	22	50	28	1	28
Limited English Proficient	17	94	6	0	0	0	12	83	17	0	0	0
Economically Disadvantaged	51	51	33	16	0	16	58	41	41	17	0	17
Not Economically Disadvantaged	106	11	61	25	2	27	131	19	50	30	1	31
Not Migrant	157	24	52	22	1	24	189	26	48	26	1	26

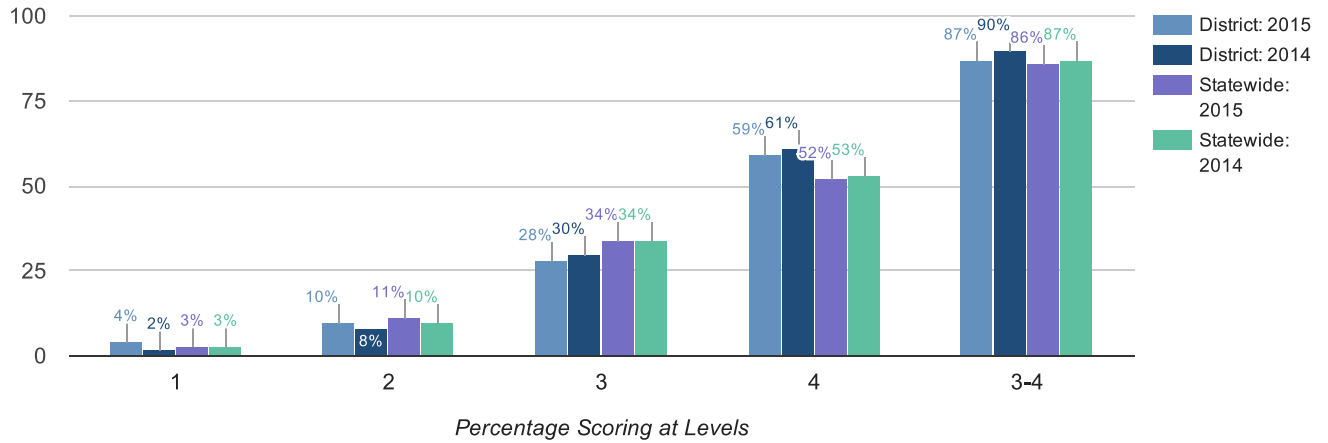


Grade 8 Students Taking a Regents Math Test

Accelerated grade 8 students who took a Regents math test in lieu of the Grade 8 NYSTP in Mathematics.

Results by Student Group	2015					
	Total Tested	Percent Scoring at Level(s)				
		1	2	3	4 & above	3 & above
All Students	108	0	0	6	94	100

## Grade 4 Science



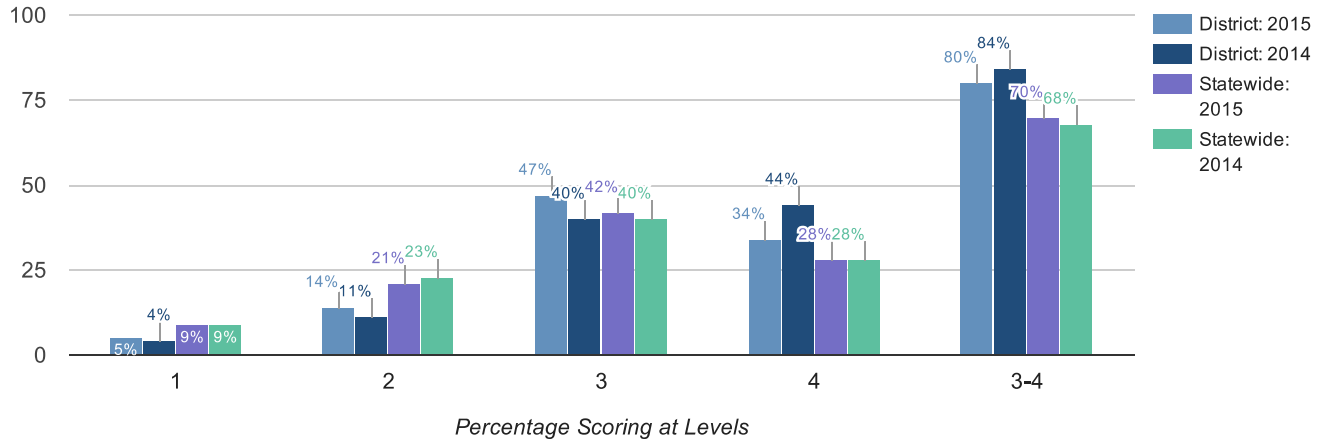
### Mean Score

2015	2014
83	84

Results by Student Group	2015						2014					
	Total Tested	Percent Scoring at Level(s)				% Proficient (Levels 3 and 4)	Total Tested	Percent Scoring at Level(s)				% Proficient (Levels 3 and 4)
		1	2	3	4			1	2	3	4	
All Students	313	4	10	28	59	87	335	2	8	30	61	90
General Education	281	2	6	27	64	91	301	1	5	29	65	94
Students with Disabilities	32	13	38	38	13	50	34	12	29	38	21	59
Asian or Native Hawaiian/Other Pacific Islander	16	0	6	19	75	94	8	0	0	25	75	100
Black or African American	9	22	11	22	44	67	8	0	13	25	63	88
Hispanic or Latino	112	7	20	43	30	73	89	8	24	40	28	69
White	165	1	4	20	76	96	214	0	2	25	73	98
Multiracial	11	0	0	9	91	100	16	0	0	38	63	100
Female	145	3	9	24	63	88	154	1	8	34	56	91
Male	168	4	10	31	55	86	181	3	8	25	64	90
English Proficient	275	1	7	26	67	92	303	0	3	30	67	96
Limited English Proficient	38	21	32	42	5	47	32	19	50	28	3	31
Economically Disadvantaged	91	11	22	47	20	67	87	8	22	44	26	70
Not Economically Disadvantaged	222	0	5	20	75	95	248	0	3	25	73	97
Not Migrant	313	4	10	28	59	87	335	2	8	30	61	90

## Grade 8 Science

Data in the bar charts include those for grade 8 students who took the New York State Grade 8 Science Test and grade 8 students who took a Regents science test in lieu of this test. Mean scores and data in the table for grade 8 science include only those for grade 8 students who took the New York State Grade 8 Science Test.



### Mean Score

2015	2014
76	78

Results by Student Group	2015						2014					
	Total Tested	Percent Scoring at Level(s)				% Proficient (Levels 3 and 4)	Total Tested	Percent Scoring at Level(s)				% Proficient (Levels 3 and 4)
		1	2	3	4			1	2	3	4	
All Students	276	5	14	47	34	80	316	4	11	40	44	84
General Education	259	3	14	47	36	83	298	4	9	41	47	87
Students with Disabilities	17	35	18	41	6	47	18	17	50	33	0	33
Asian or Native Hawaiian/Other Pacific Islander	9	0	0	33	67	100	14	0	14	36	50	86
Black or African American	9	0	44	56	0	56	13	15	31	31	23	54
Hispanic or Latino	85	15	29	41	14	55	70	16	20	51	13	64
White	167	1	6	51	42	93	208	0	7	37	56	92
Multiracial	6	0	0	17	83	100	11	0	9	55	36	91
Female	132	2	11	46	40	86	149	4	9	40	46	87
Male	144	8	17	47	28	75	167	5	13	40	42	82
English Proficient	257	2	12	50	36	86	304	3	10	42	46	88
Limited English Proficient	19	58	37	5	0	5	12	50	50	0	0	0
Economically Disadvantaged	67	19	28	42	10	52	62	16	31	45	8	53
Not Economically Disadvantaged	209	1	10	48	41	89	254	2	7	39	53	92
Not Migrant	276	5	14	47	34	80	316	4	11	40	44	84

**Recently Arrived LEP Students Taking NYSESLAT in Lieu of NYSTP: Grade 3**

2015	2014
3	2

**Recently Arrived LEP Students NOT Tested on the ELA NYSTP: Grade 3**

2015	2014
3	2

**Recently Arrived LEP Students Taking NYSESLAT in Lieu of NYSTP: Grade 4**

2015	2014
9	0

**Recently Arrived LEP Students NOT Tested on the ELA NYSTP: Grade 4**

2015	2014
9	0

**Recently Arrived LEP Students Taking NYSESLAT in Lieu of NYSTP: Grade 5**

2015	2014
3	0

**Recently Arrived LEP Students NOT Tested on the ELA NYSTP: Grade 5**

2015	2014
3	0

**Recently Arrived LEP Students Taking NYSESLAT in Lieu of NYSTP: Grade 6**

2015	2014
4	0

**Recently Arrived LEP Students NOT Tested on the ELA NYSTP: Grade 6**

2015	2014
4	0

**Recently Arrived LEP Students Taking NYSESLAT in Lieu of NYSTP: Grade 7**

2015

8

2014

5

**Recently Arrived LEP Students NOT Tested on the ELA NYSTP: Grade 7**

2015

8

2014

5

**Recently Arrived LEP Students Taking NYSESLAT in Lieu of NYSTP: Grade 8**

2015

7

2014

5

**Recently Arrived LEP Students NOT Tested on the ELA NYSTP: Grade 8**

2015

7

2014

5



# Statewide Results on the National Assessment of Educational Progress: NAEP (2014 - 15)

## NAEP Grade 4 Reading

	% Below Basic	% Basic	% Proficient	% Advanced
All Students	32	32	27	9
American Indian or Alaska Native	*	*	*	*
Asian or Native Hawaiian/Other Pacific Islander	20	30	33	17
Black or African American	48	34	15	3
Hispanic or Latino	44	37	17	2
White	20	31	37	12
Multiracial	*	*	*	*
Students with Disabilities	70	22	7	1
Limited English Proficient	74	21	4	1
Economically Disadvantaged	43	36	18	3

## NAEP Grade 4 Mathematics

	% Below Basic	% Basic	% Proficient	% Advanced
All Students	21	44	30	5
American Indian or Alaska Native	*	*	*	*
Asian or Native Hawaiian/Other Pacific Islander	12	31	42	15
Black or African American	40	46	13	1
Hispanic or Latino	28	51	20	1
White	12	41	40	7
Multiracial	*	*	*	*
Students with Disabilities	49	39	10	2
Limited English Proficient	56	35	9	*
Economically Disadvantaged	29	48	21	2

\*Reporting standards not met.

# Statewide Results on the National Assessment of Educational Progress: NAEP (2014 - 15)

## NAEP Grade 8 Reading

	% Below Basic	% Basic	% Proficient	% Advanced
All Students	27	40	29	4
American Indian or Alaska Native	*	*	*	*
Asian or Native Hawaiian/Other Pacific Islander	19	39	34	8
Black or African American	42	41	16	1
Hispanic or Latino	35	43	20	2
White	18	39	38	5
Multiracial	*	*	*	*
Students with Disabilities	59	33	8	*
Limited English Proficient	78	19	3	*
Economically Disadvantaged	36	42	21	1

## NAEP Grade 8 Mathematics

	% Below Basic	% Basic	% Proficient	% Advanced
All Students	31	38	24	7
American Indian or Alaska Native	*	*	*	*
Asian or Native Hawaiian/Other Pacific Islander	18	30	33	19
Black or African American	48	37	13	2
Hispanic or Latino	41	40	16	3
White	20	40	31	9
Multiracial	*	*	*	*
Students with Disabilities	64	27	8	1
Limited English Proficient	72	21	6	1
Economically Disadvantaged	40	39	17	4

\*Reporting standards not met.

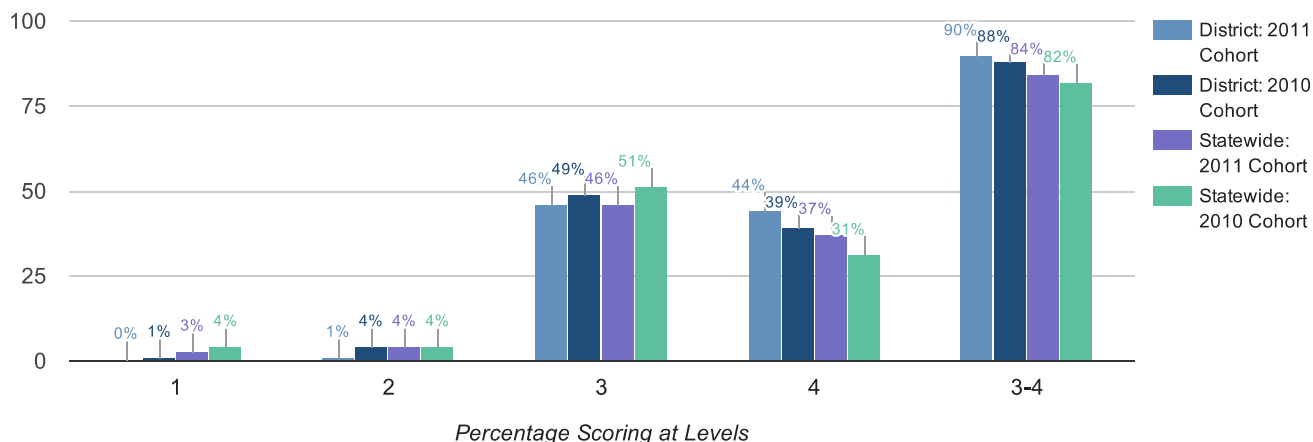
# Statewide Results on the National Assessment of Educational Progress: NAEP (2014 - 15)

## NAEP Participation Rates

Grade 4 Reading	Participation Rate
Students with Disabilities	98
Limited English Proficient	88
Grade 4 Mathematics	Participation Rate
Students with Disabilities	98
Limited English Proficient	91
Grade 8 Reading	Participation Rate
Students with Disabilities	98
Limited English Proficient	89
Grade 8 Mathematics	Participation Rate
Students with Disabilities	99
Limited English Proficient	94

# Total Cohort Results in Secondary-Level English Language Arts after Four Years of Instruction

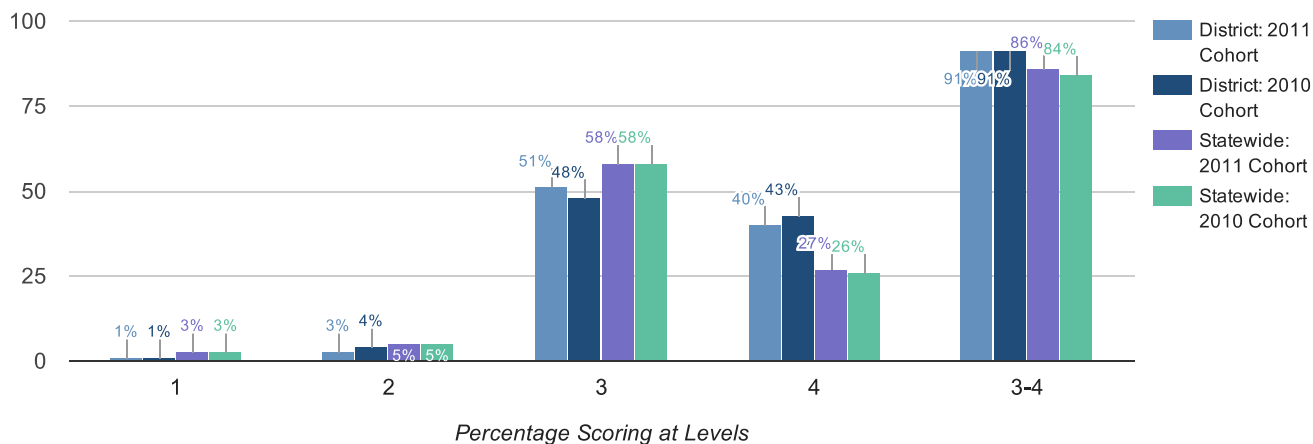
Total cohort results are those for New York State Regents and alternatives to Regents examinations only.



Results by Student Group	2011 Cohort						2010 Cohort					
	Number of Students	Percent Scoring at Level(s)				% Proficient (Levels 3 & above)	Number of Students	Percent Scoring at Level(s)				% Proficient (Levels 3 & above)
		1	2	3	4 & above			1	2	3	4 & above	
All Students	315	0	1	46	44	90	324	1	4	49	39	88
General Education	282	0	0	45	49	94	291	0	1	51	43	93
Students with Disabilities	33	0	6	55	3	58	33	12	30	36	3	39
American Indian or Alaska Native	1	—	—	—	—	—	0	0	0	0	0	0
Asian or Native Hawaiian/Other Pacific Islander	15	0	0	53	40	93	9	0	0	78	22	100
Black or African American	11	—	—	—	—	—	28	7	14	64	4	68
Hispanic or Latino	77	1	0	51	21	71	76	0	3	51	22	74
White	209	0	0	43	53	96	202	1	3	44	51	95
Multiracial	2	—	—	—	—	—	9	0	0	67	33	100
Small Group Total	14	0	7	50	43	93	0	0	0	0	0	0
Female	160	0	1	45	49	94	159	0	4	48	45	92
Male	155	1	0	46	39	85	165	2	3	50	33	84
English Proficient	297	0	1	48	47	95	309	1	4	51	41	92
Limited English Proficient	18	0	0	11	0	11	15	0	0	7	0	7
Economically Disadvantaged	74	1	1	54	23	77	67	1	4	61	10	72
Not Economically Disadvantaged	241	0	0	43	51	94	257	1	4	46	46	92
Not Migrant	315	0	1	46	44	90	324	1	4	49	39	88

# Total Cohort Results in Secondary-Level Mathematics after Four Years of Instruction

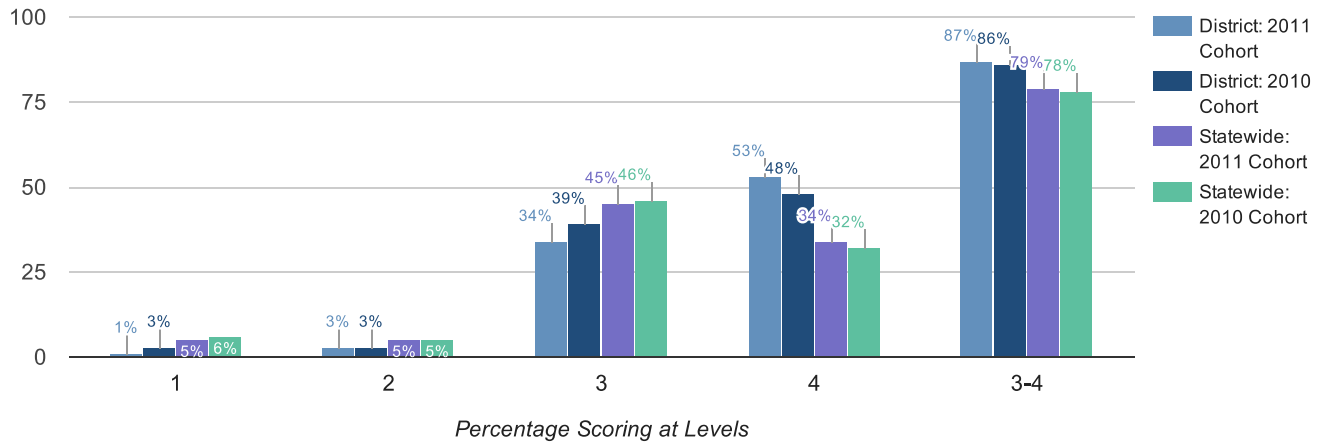
Total cohort results are those for New York State Regents and alternatives to Regents examinations only.



Results by Student Group	2011 Cohort						2010 Cohort					
	Number of Students	Percent Scoring at Level(s)				% Proficient (Levels 3 & above)	Number of Students	Percent Scoring at Level(s)				% Proficient (Levels 3 & above)
		1	2	3	4 & above			1	2	3	4 & above	
All Students	315	1	3	51	40	91	324	1	4	48	43	91
General Education	282	0	1	51	44	95	291	1	1	47	48	95
Students with Disabilities	33	3	15	48	3	52	33	6	24	55	0	55
American Indian or Alaska Native	1	—	—	—	—	—	0	0	0	0	0	0
Asian or Native Hawaiian/Other Pacific Islander	15	0	0	67	27	93	9	0	0	33	67	100
Black or African American	11	—	—	—	—	—	28	0	18	71	4	75
Hispanic or Latino	77	3	6	62	14	77	76	4	3	59	20	79
White	209	0	1	46	50	96	202	0	2	42	55	97
Multiracial	2	—	—	—	—	—	9	0	0	33	67	100
Small Group Total	14	0	14	50	36	86	0	0	0	0	0	0
Female	160	0	1	53	44	96	159	1	3	47	48	94
Male	155	1	5	50	35	85	165	2	5	49	38	87
English Proficient	297	0	2	53	42	95	309	1	4	49	45	94
Limited English Proficient	18	6	17	28	0	28	15	7	7	27	0	27
Economically Disadvantaged	74	3	8	62	18	80	67	4	9	64	10	75
Not Economically Disadvantaged	241	0	1	48	46	94	257	0	2	44	51	95
Not Migrant	315	1	3	51	40	91	324	1	4	48	43	91

# Total Cohort Results in Secondary-Level Global History and Geography after Four Years of Instruction

Total cohort results are those for New York State Regents and alternatives to Regents examinations only.

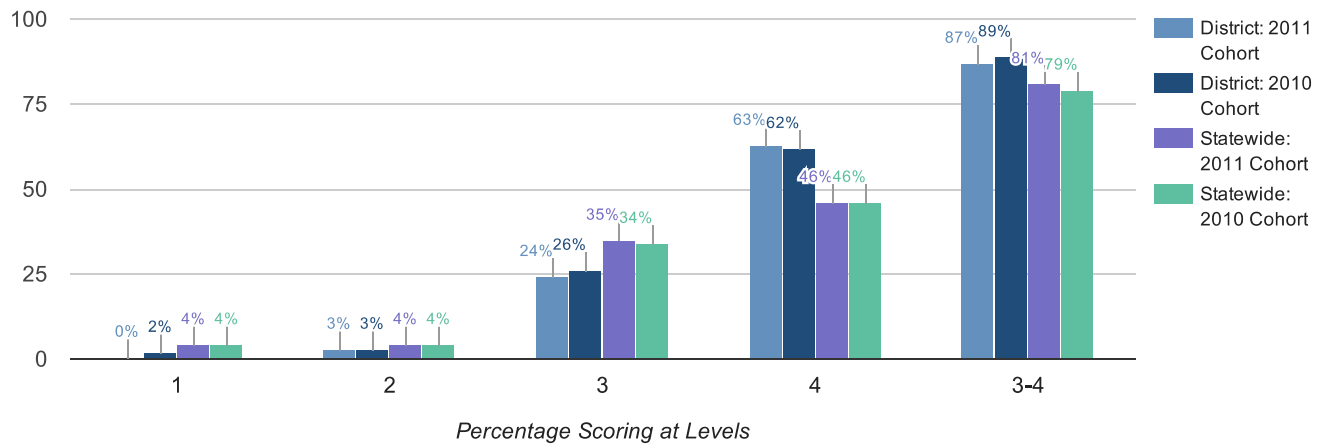


Percentage Scoring at Levels

Results by Student Group	2011 Cohort						2010 Cohort					
	Number of Students	Percent Scoring at Level(s)				% Proficient (Levels 3 and 4)	Number of Students	Percent Scoring at Level(s)				% Proficient (Levels 3 and 4)
		1	2	3	4			1	2	3	4	
All Students	315	1	3	34	53	87	324	3	3	39	48	86
General Education	282	1	2	33	59	92	291	0	1	39	53	92
Students with Disabilities	33	6	18	39	6	45	33	27	21	33	3	36
American Indian or Alaska Native	1	—	—	—	—	—	0	0	0	0	0	0
Asian or Native Hawaiian/Other Pacific Islander	15	0	0	20	67	87	9	0	11	33	56	89
Black or African American	11	—	—	—	—	—	28	14	11	46	14	61
Hispanic or Latino	77	4	5	38	32	70	76	1	3	45	32	76
White	209	0	2	31	62	93	202	2	1	35	58	93
Multiracial	2	—	—	—	—	—	9	0	0	44	56	100
Small Group Total	14	0	14	71	14	86	0	0	0	0	0	0
Female	160	1	3	35	57	92	159	3	3	41	48	89
Male	155	2	5	33	49	82	165	3	3	36	47	84
English Proficient	297	1	3	36	56	92	309	3	3	40	50	90
Limited English Proficient	18	6	17	6	0	6	15	0	7	13	0	13
Economically Disadvantaged	74	4	9	45	27	72	67	4	7	51	19	70
Not Economically Disadvantaged	241	0	2	31	61	92	257	3	2	35	55	91
Not Migrant	315	1	3	34	53	87	324	3	3	39	48	86

# Total Cohort Results in Secondary-Level U.S. History and Government after Four Years of Instruction

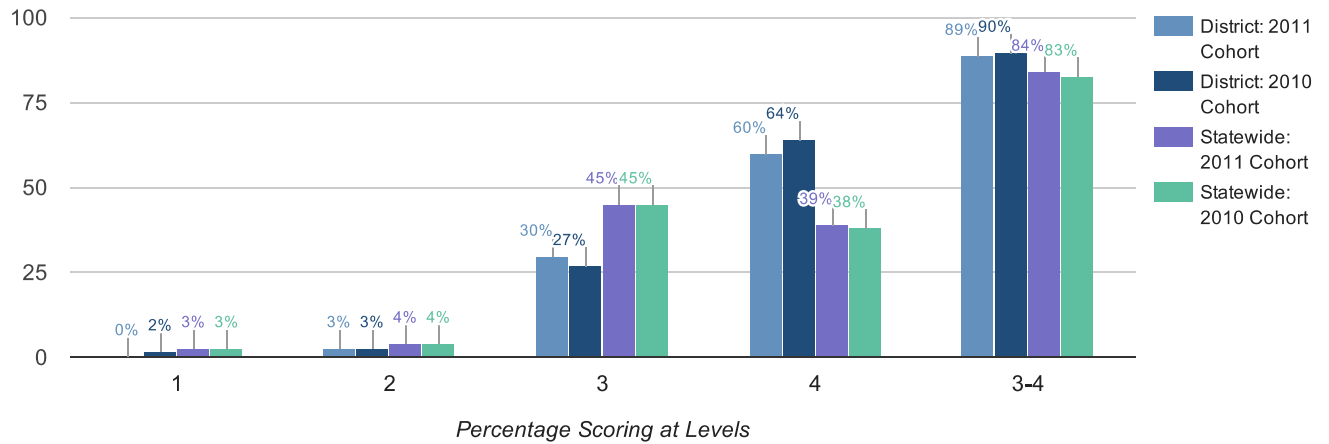
Total cohort results are those for New York State Regents and alternatives to Regents examinations only.



Results by Student Group	2011 Cohort						2010 Cohort					
	Number of Students	Percent Scoring at Level(s)				% Proficient (Levels 3 and 4)	Number of Students	Percent Scoring at Level(s)				% Proficient (Levels 3 and 4)
		1	2	3	4			1	2	3	4	
All Students	315	0	3	24	63	87	324	2	3	26	62	89
General Education	282	0	0	24	70	94	291	1	0	25	68	93
Students with Disabilities	33	3	27	24	9	33	33	12	24	39	9	48
American Indian or Alaska Native	1	—	—	—	—	—	0	0	0	0	0	0
Asian or Native Hawaiian/Other Pacific Islander	15	0	7	7	80	87	9	0	0	11	89	100
Black or African American	11	—	—	—	—	—	28	7	14	32	36	68
Hispanic or Latino	77	0	3	31	39	70	76	3	1	37	36	72
White	209	0	3	21	72	93	202	1	2	22	75	97
Multiracial	2	—	—	—	—	—	9	0	0	33	67	100
Small Group Total	14	0	7	50	43	93	0	0	0	0	0	0
Female	160	1	3	26	66	93	159	3	3	25	67	92
Male	155	0	4	22	60	82	165	1	2	28	58	85
English Proficient	297	0	3	25	67	92	309	2	3	27	65	93
Limited English Proficient	18	0	0	11	0	11	15	0	0	7	0	7
Economically Disadvantaged	74	0	5	36	38	74	67	6	0	40	33	73
Not Economically Disadvantaged	241	0	2	20	71	91	257	1	4	23	70	93
Not Migrant	315	0	3	24	63	87	324	2	3	26	62	89

## Total Cohort Results in Secondary-Level Science after Four Years of Instruction

Total cohort results are those for New York State Regents and alternatives to Regents examinations only.



Results by Student Group	2011 Cohort						2010 Cohort					
	Number of Students	Percent Scoring at Level(s)				% Proficient (Levels 3 and 4)	Number of Students	Percent Scoring at Level(s)				% Proficient (Levels 3 and 4)
		1	2	3	4			1	2	3	4	
All Students	315	0	3	30	60	89	324	2	3	27	64	90
General Education	282	0	1	30	65	95	291	0	1	25	70	95
Students with Disabilities	33	3	24	27	15	42	33	15	21	39	9	48
American Indian or Alaska Native	1	—	—	—	—	—	0	0	0	0	0	0
Asian or Native Hawaiian/Other Pacific Islander	15	0	0	27	60	87	9	0	0	22	78	100
Black or African American	11	—	—	—	—	—	28	7	11	61	14	75
Hispanic or Latino	77	1	5	40	35	75	76	3	3	37	42	79
White	209	0	3	24	70	94	202	1	2	18	77	96
Multiracial	2	—	—	—	—	—	9	0	0	22	78	100
Small Group Total	14	0	7	50	43	93	0	0	0	0	0	0
Female	160	0	3	29	64	93	159	1	4	26	65	91
Male	155	1	4	30	55	85	165	2	2	27	62	89
English Proficient	297	0	3	30	63	93	309	2	3	26	67	93
Limited English Proficient	18	0	6	28	0	28	15	7	0	33	0	33
Economically Disadvantaged	74	1	8	42	35	77	67	4	9	48	27	75
Not Economically Disadvantaged	241	0	2	26	67	93	257	1	1	21	73	94
Not Migrant	315	0	3	30	60	89	324	2	3	27	64	90



## Regents Examination Results (2014 - 15)

Results by Student Group	Comprehensive English				Integrated Algebra			
	Total Tested	Percent of students scoring at or above			Total Tested	Percent of students scoring at or above		
		55	65	85		55	65	85
All Students	328	99	96	53	92	85	68	3
General Education	308	99	98	57	63	86	68	5
Students with Disabilities	20	95	70	0	29	83	69	0
American Indian or Alaska Native	1	—	—	—	0	0	0	0
Asian or Native Hawaiian/Other Pacific Islander	20	100	100	80	3	—	—	—
Black or African American	17	100	100	29	7	—	—	—
Hispanic or Latino	66	97	92	27	50	84	62	2
White	220	100	97	60	32	81	69	3
Multiracial	4	—	—	—	0	0	0	0
Small Group Total	5	100	100	100	10	100	100	10
Female	145	99	97	61	29	86	72	3
Male	183	99	96	48	63	84	67	3
English Proficient	323	99	97	54	66	89	74	3
Limited English Proficient	5	100	80	0	26	73	54	4
Economically Disadvantaged	64	98	95	23	48	85	69	2
Not Economically Disadvantaged	264	99	97	61	44	84	68	5
Not Migrant	328	99	96	53	92	85	68	3

# Regents Examination Results (2014 - 15)

Results by Student Group	English Language Arts (Common Core)						Algebra I (Common Core)					
	Total Tested	Percent of students scoring at					Total Tested	Percent of students scoring at				
		Level 1	Level 2	Level 3	Level 4	Level 5		Level 1	Level 2	Level 3	Level 4	Level 5
All Students	34	0	0	0	3	97	318	10	15	33	23	19
General Education	33	—	—	—	—	—	292	7	13	35	25	21
Students with Disabilities	1	—	—	—	—	—	26	50	38	12	0	0
American Indian or Alaska Native	0	0	0	0	0	0	0	0	0	0	0	0
Asian or Native Hawaiian/Other Pacific Islander	3	—	—	—	—	—	20	5	5	35	25	30
Black or African American	2	—	—	—	—	—	9	33	44	22	0	0
Hispanic or Latino	3	—	—	—	—	—	83	24	24	41	7	4
White	26	0	0	0	0	100	198	5	11	30	30	24
Multiracial	0	0	0	0	0	0	8	0	25	13	13	50
Small Group Total	8	0	0	0	13	88	0	0	0	0	0	0
Female	21	0	0	0	5	95	166	5	13	34	26	22
Male	13	0	0	0	0	100	152	16	18	32	19	16
English Proficient	34	0	0	0	3	97	295	7	14	34	24	20
Limited English Proficient	0	0	0	0	0	0	23	48	35	13	0	4
Economically Disadvantaged	2	—	—	—	—	—	71	27	28	31	7	7
Not Economically Disadvantaged	32	—	—	—	—	—	247	6	12	33	27	22
Not Migrant	34	0	0	0	3	97	318	10	15	33	23	19

## Regents Examination Results (2014 - 15)

Results by Student Group	Geometry				Algebra 2/Trigonometry			
	Total Tested	Percent of students scoring at or above			Total Tested	Percent of students scoring at or above		
		55	65	85		55	65	85
All Students	242	98	90	43	208	95	87	50
General Education	237	98	90	43	205	—	—	—
Students with Disabilities	5	100	80	40	3	—	—	—
American Indian or Alaska Native	0	0	0	0	0	0	0	0
Asian or Native Hawaiian/Other Pacific Islander	12	100	100	50	20	95	90	70
Black or African American	7	—	—	—	7	—	—	—
Hispanic or Latino	37	95	73	16	29	83	76	34
White	182	98	93	47	150	97	88	49
Multiracial	4	—	—	—	2	—	—	—
Small Group Total	11	100	82	55	9	100	89	78
Female	125	99	91	45	110	96	87	50
Male	117	97	89	40	98	93	86	50
English Proficient	241	—	—	—	207	—	—	—
Limited English Proficient	1	—	—	—	1	—	—	—
Economically Disadvantaged	27	96	70	4	20	85	75	30
Not Economically Disadvantaged	215	98	93	47	188	96	88	52
Not Migrant	242	98	90	43	208	95	87	50

## Regents Examination Results (2014 - 15)

Results by Student Group	Global History and Geography				U.S. History & Government			
	Total Tested	Percent of students scoring at or above			Total Tested	Percent of students scoring at or above		
		55	65	85		55	65	85
All Students	362	94	86	53	357	99	97	75
General Education	323	98	91	58	336	99	99	78
Students with Disabilities	39	69	46	13	21	90	67	24
American Indian or Alaska Native	0	0	0	0	1	—	—	—
Asian or Native Hawaiian/Other Pacific Islander	21	95	86	76	23	100	96	91
Black or African American	16	—	—	—	18	100	89	61
Hispanic or Latino	80	88	70	33	70	96	94	53
White	241	97	92	59	241	100	98	81
Multiracial	4	—	—	—	4	—	—	—
Small Group Total	20	90	80	40	5	100	100	60
Female	168	96	89	57	168	98	95	71
Male	194	93	83	50	189	99	98	78
English Proficient	347	95	88	55	353	—	—	—
Limited English Proficient	15	73	40	13	4	—	—	—
Economically Disadvantaged	66	85	64	18	67	99	93	49
Not Economically Disadvantaged	296	97	91	61	290	99	98	81
Not Migrant	362	94	86	53	357	99	97	75

# Regents Examination Results (2014 - 15)

Results by Student Group	Living Environment				Physical Setting/Earth Science			
	Total Tested	Percent of students scoring at or above			Total Tested	Percent of students scoring at or above		
		55	65	85		55	65	85
All Students	340	96	92	58	125	83	66	14
General Education	313	97	95	62	103	84	71	17
Students with Disabilities	27	81	63	4	22	77	45	0
American Indian or Alaska Native	0	0	0	0	0	0	0	0
Asian or Native Hawaiian/Other Pacific Islander	16	100	94	56	4	—	—	—
Black or African American	18	72	61	22	11	73	36	0
Hispanic or Latino	75	93	84	29	50	76	60	8
White	225	99	97	70	58	91	78	19
Multiracial	6	100	100	67	2	—	—	—
Small Group Total	0	0	0	0	6	83	67	33
Female	162	98	93	65	53	77	60	9
Male	178	95	92	51	72	88	71	17
English Proficient	321	98	95	61	114	86	70	15
Limited English Proficient	19	68	47	5	11	55	27	0
Economically Disadvantaged	65	86	75	17	48	71	56	6
Not Economically Disadvantaged	275	99	96	67	77	91	73	18
Not Migrant	340	96	92	58	125	83	66	14

## Regents Examination Results (2014 - 15)

Results by Student Group	Physical Setting/Chemistry				Physical Setting/Physics			
	Total Tested	Percent of students scoring at or above			Total Tested	Percent of students scoring at or above		
		55	65	85		55	65	85
All Students	268	100	90	36	209	96	85	37
General Education	265	—	—	—	208	—	—	—
Students with Disabilities	3	—	—	—	1	—	—	—
American Indian or Alaska Native	0	0	0	0	0	0	0	0
Asian or Native Hawaiian/Other Pacific Islander	24	100	92	50	16	100	88	44
Black or African American	9	100	78	11	5	—	—	—
Hispanic or Latino	37	100	78	14	25	92	76	28
White	193	100	92	39	162	96	85	38
Multiracial	5	100	100	60	1	—	—	—
Small Group Total	0	0	0	0	6	100	100	17
Female	138	100	88	35	96	94	83	34
Male	130	100	92	38	113	98	86	39
English Proficient	267	—	—	—	209	96	85	37
Limited English Proficient	1	—	—	—	0	0	0	0
Economically Disadvantaged	30	100	73	3	14	93	86	36
Not Economically Disadvantaged	238	100	92	40	195	96	85	37
Not Migrant	268	100	90	36	209	96	85	37

## Regents Examination Results (2014 - 15)

Results by Student Group	Common Core Geometry					
	Total Tested	Percent of students scoring at				
		Level 1	Level 2	Level 3	Level 4	Level 5
All Students	233	4	12	40	15	30
General Education	229	—	—	—	—	—
Students with Disabilities	4	—	—	—	—	—
American Indian or Alaska Native	0	0	0	0	0	0
Asian or Native Hawaiian/Other Pacific Islander	11	0	9	45	18	27
Black or African American	7	—	—	—	—	—
Hispanic or Latino	34	12	26	47	9	6
White	177	3	9	39	15	34
Multiracial	4	—	—	—	—	—
Small Group Total	11	9	9	27	18	36
Female	121	3	15	40	17	26
Male	112	5	8	40	13	34
English Proficient	232	—	—	—	—	—
Limited English Proficient	1	—	—	—	—	—
Economically Disadvantaged	24	13	29	46	13	0
Not Economically Disadvantaged	209	3	10	39	15	33
Not Migrant	233	4	12	40	15	30

## Regents Competency Test Results (2014 - 15)

Results by Student Group	Reading		Writing		Math	
	Total Tested	Percent Passing	Total Tested	Percent Passing	Total Tested	Percent Passing
All Students	1	—	0	0	0	0
General Education	1	—	0	0	0	0
Students with Disabilities	0	0	0	0	0	0
Black or African American	1	—	0	0	0	0
White	0	0	0	0	0	0
Small Group Total	1	—	0	0	0	0
Female	0	0	0	0	0	0
Male	1	—	0	0	0	0
English Proficient	1	—	0	0	0	0
Economically Disadvantaged	0	0	0	0	0	0
Not Economically Disadvantaged	1	—	0	0	0	0
Not Migrant	1	—	0	0	0	0



## Regents Competency Test Results (2014 - 15)

Results by Student Group	Global Studies		U.S. History & Government		Science	
	Total Tested	Percent Passing	Total Tested	Percent Passing	Total Tested	Percent Passing
All Students	1	—	0	0	1	—
General Education	0	0	0	0	0	0
Students with Disabilities	1	—	0	0	1	—
Black or African American	0	0	0	0	0	0
White	1	—	0	0	1	—
Small Group Total	1	—	0	0	1	—
Female	1	—	0	0	1	—
Male	0	0	0	0	0	0
English Proficient	1	—	0	0	1	—
Economically Disadvantaged	1	—	0	0	1	—
Not Economically Disadvantaged	0	0	0	0	0	0
Not Migrant	1	—	0	0	1	—

## New York State Alternate Assessment (NYSAA) Results (2014 - 15)

Grade/Subject	Total Tested	Number Scoring at Level(s)				% Proficient (Levels 3 and 4)
		1	2	3	4	
Grade 3 ELA	3	—	—	—	—	—
Grade 3 Math	3	—	—	—	—	—
Grade 4 ELA	6	0	0	6	0	100
Grade 4 Math	6	0	1	5	0	83
Grade 4 Science	6	0	0	6	0	100
Grade 5 ELA	9	1	1	4	3	78
Grade 5 Math	9	2	0	5	2	78
Grade 6 ELA	5	0	0	5	0	100
Grade 6 Math	5	0	1	3	1	80
Grade 7 ELA	7	0	0	7	0	100
Grade 7 Math	7	0	3	4	0	57
Grade 8 ELA	4	—	—	—	—	—
Grade 8 Math	4	—	—	—	—	—
Grade 8 Science	4	—	—	—	—	—
Secondary-Level ELA	6	0	3	3	0	50
Secondary-Level Math	6	1	0	5	0	83
Secondary-Level Science	6	0	1	3	2	83
Secondary-Level Social Studies	6	0	1	3	2	83

# New York State English as a Second Language Achievement Test (NYSESLAT) Results (2014 - 15)

Kindergarten	Total Tested	Percent of Students Scoring at Level(s)				
		Entering	Emerging	Transitioning	Expanding	Commanding
All Students	84	6%	14%	20%	49%	11%
General Education	67	4%	16%	19%	48%	12%
Students with Disabilities	17	12%	6%	24%	53%	6%
Grade 1	Total Tested	Percent of Students Scoring at Level(s)				
		Entering	Emerging	Transitioning	Expanding	Commanding
All Students	73	8%	18%	22%	41%	11%
General Education	65	9%	17%	22%	40%	12%
Students with Disabilities	8	0%	25%	25%	50%	0%
Grade 2	Total Tested	Percent of Students Scoring at Level(s)				
		Entering	Emerging	Transitioning	Expanding	Commanding
All Students	63	6%	6%	10%	51%	27%
General Education	56	5%	7%	5%	55%	27%
Students with Disabilities	7	14%	0%	43%	14%	29%
Grade 3	Total Tested	Percent of Students Scoring at Level(s)				
		Entering	Emerging	Transitioning	Expanding	Commanding
All Students	44	9%	11%	14%	43%	23%
General Education	39	8%	8%	15%	46%	23%
Students with Disabilities	5	20%	40%	0%	20%	20%
Grade 4	Total Tested	Percent of Students Scoring at Level(s)				
		Entering	Emerging	Transitioning	Expanding	Commanding
All Students	39	18%	8%	5%	38%	31%
General Education	31	19%	3%	0%	42%	35%
Students with Disabilities	8	13%	25%	25%	25%	13%
Grade 5	Total Tested	Percent of Students Scoring at Level(s)				
		Entering	Emerging	Transitioning	Expanding	Commanding
All Students	30	10%	10%	7%	53%	20%
General Education	17	12%	0%	0%	59%	29%
Students with Disabilities	13	8%	23%	15%	46%	8%
Grade 6	Total Tested	Percent of Students Scoring at Level(s)				
		Entering	Emerging	Transitioning	Expanding	Commanding
All Students	20	20%	5%	5%	40%	30%
General Education	13	23%	0%	8%	31%	38%
Students with Disabilities	7	14%	14%	0%	57%	14%

Grade 7	Total Tested	Percent of Students Scoring at Level(s)				
		Entering	Emerging	Transitioning	Expanding	Commanding
All Students	24	33%	8%	13%	29%	17%
General Education	18	33%	11%	6%	28%	22%
Students with Disabilities	6	33%	0%	33%	33%	0%
Grade 8	Total Tested	Percent of Students Scoring at Level(s)				
		Entering	Emerging	Transitioning	Expanding	Commanding
All Students	18	56%	11%	6%	22%	6%
General Education	16	—	—	—	—	—
Students with Disabilities	2	—	—	—	—	—
Grade 9	Total Tested	Percent of Students Scoring at Level(s)				
		Entering	Emerging	Transitioning	Expanding	Commanding
All Students	62	61%	8%	10%	13%	8%
General Education	57	67%	9%	11%	9%	5%
Students with Disabilities	5	0%	0%	0%	60%	40%
Grade 10	Total Tested	Percent of Students Scoring at Level(s)				
		Entering	Emerging	Transitioning	Expanding	Commanding
All Students	39	23%	23%	31%	8%	15%
General Education	36	—	—	—	—	—
Students with Disabilities	3	—	—	—	—	—
Grade 11	Total Tested	Percent of Students Scoring at Level(s)				
		Entering	Emerging	Transitioning	Expanding	Commanding
All Students	16	0%	6%	0%	50%	44%
General Education	16	0%	6%	0%	50%	44%
Grade 12	Total Tested	Percent of Students Scoring at Level(s)				
		Entering	Emerging	Transitioning	Expanding	Commanding
All Students	2	—	—	—	—	—
General Education	1	—	—	—	—	—
Students with Disabilities	1	—	—	—	—	—

## Elementary/Middle-Level English Language Arts Results for Accountability

All accountability groups made AYP: NO

Student Group	Made AYP	Tested 95%	Students Enrolled During the Test Administration Period	Percent of Enrolled Students with Valid Test Scores	PI >= EAMO or Safe Harbor Target	Tested Students Enrolled on BEDS Day	PI	EAMO	Safe Harbor Target
All Students	✓	✓	3,956*	96%*	✓	1,773	124	94	94
American Indian or Alaska Native	—	—	0	—	—	0	—	—	—
Black or African American	✓	✓	58	95%	✓	55	84	65	65
Hispanic or Latino	✓	✓	560	95%	✓	490	78	78	78
Asian or Native Hawaiian/Other Pacific Islander	X	X	160*	93%*	✓	70	141	112	112
White	✓	✓	2,461*	95%*	✓	1,100	144	111	111
Multiracial	✓	✓	132*	95%*	✓	58	148	84	84
Students With Disabilities	X	X	419*	93%*	✓	199†	66†	52	52
Limited English Proficient	X	✓	177	98%	X	189‡	44‡	55	55
Economically Disadvantaged	X	✓	502	95%	X	441	72	79	79

Results for the following groups are NOT used to determine AYP.

Student Group	Students Enrolled During the Test Administration Period	Percent of Enrolled Students with Valid Test Scores	Tested Students Enrolled on BEDS Day	PI
Not American Indian or Alaska Native	3,956*	96%*	1,773	124
Not Black or African American	3,828*	95%*	1,718	125
Not Hispanic or Latino	2,881*	95%*	1,283	141
Not Asian or Native Hawaiian/Other Pacific Islander	3,796*	96%*	1,703	123
Not White	1,495*	97%*	673	91
Not Multiracial	3,824*	96%*	1,715	123
General Education	3,537*	96%*	1,587	131
English Proficient	3,648*	95%*	1,636	132
Not Economically Disadvantaged	2,996*	95%*	1,332	141
Male	2,045*	96%*	933	114
Female	1,911*	95%*	840	135
Migrant	0	—	0	—
Not Migrant	3,956*	96%*	1,773	124

✓ Yes

X No

— There were fewer than 40 students enrolled during the test administration period, so the Percent of Enrolled Students with Valid Test Scores data are suppressed OR there were fewer than 30 tested students enrolled on BEDS day and during the test administration period, so the PI, EAMO, and Safe Harbor Target data are suppressed.

\*The percentage of students tested in the current year fell below 95 percent, so the numbers of enrolled and tested students in the current year and previous year were combined to provide the school/district with another opportunity to meet the participation rate criterion.

† Includes former students with disabilities because the number of students with disabilities in the current year is equal to or greater than 30.

‡ Includes former limited English proficient students because the number of limited English proficient students in the current year is equal to or greater than 30.



## Elementary/Middle-Level Mathematics Results for Accountability

All accountability groups made AYP: NO

Student Group	Made AYP	Tested 95%	Students Enrolled During the Test Administration Period	Percent of Enrolled Students with Valid Test Scores	PI >= EAMO or Safe Harbor Target	Tested Students Enrolled on BEDS Day	PI	EAMO	Safe Harbor Target
All Students	X	X	3,959*	94%*	✓	1,754	141	91	91
American Indian or Alaska Native	—	—	0	—	—	0	—	—	—
Black or African American	X	X	128*	91%*	✓	46	93	58	58
Hispanic or Latino	✓	✓	1,079*	96%*	✓	502	95	76	76
Asian or Native Hawaiian/Other Pacific Islander	X	X	160*	93%*	✓	70	169	126	126
White	X	X	2,460*	94%*	✓	1,076	162	107	107
Multiracial	✓	✓	64	95%	✓	60	172	77	77
Students With Disabilities	X	X	418*	91%*	✓	192†	76†	54	54
Limited English Proficient	X	✓	177	98%	X	216‡	55‡	58	58
Economically Disadvantaged	✓	✓	964*	95%*	✓	443	88	76	76

Results for the following groups are NOT used to determine AYP.

Student Group	Students Enrolled During the Test Administration Period	Percent of Enrolled Students with Valid Test Scores	Tested Students Enrolled on BEDS Day	PI
Not American Indian or Alaska Native	3,959*	94%*	1,754	141
Not Black or African American	3,831*	94%*	1,708	143
Not Hispanic or Latino	2,880*	94%*	1,252	160
Not Asian or Native Hawaiian/Other Pacific Islander	3,799*	94%*	1,684	140
Not White	1,499*	95%*	678	109
Not Multiracial	3,827*	94%*	1,694	140
General Education	3,541*	94%*	1,576	150
English Proficient	3,650*	94%*	1,592	152
Not Economically Disadvantaged	2,995*	94%*	1,311	159
Male	2,045*	95%*	924	139
Female	1,914*	93%*	830	144
Migrant	0	—	0	—
Not Migrant	3,959*	94%*	1,754	141

✓ Yes

X No

— There were fewer than 40 students enrolled during the test administration period, so the Percent of Enrolled Students with Valid Test Scores data are suppressed OR there were fewer than 30 tested students enrolled on BEDS day and during the test administration period, so the PI, EAMO, and Safe Harbor Target data are suppressed.

\*The percentage of students tested in the current year fell below 95 percent, so the numbers of enrolled and tested students in the current year and previous year were combined to provide the school/district with another opportunity to meet the participation rate criterion.

† Includes former students with disabilities because the number of students with disabilities in the current year is equal to or greater than 30.

‡ Includes former limited English proficient students because the number of limited English proficient students in the current year is equal to or greater than 30.





## Elementary/Middle-Level Science Results for Accountability

All accountability groups made AYP: NO

Student Group	Made AYP	Tested 80%	Students Enrolled During the Test Administration Period	Percent of Enrolled Students with Valid Test Scores	PI >= EAMO or Progress Target	Tested Students Enrolled on BEDS Day	PI	EAMO	Progress Target
All Students	✓	✓	671	89%	✓	582	180	180	180
American Indian or Alaska Native	—	—	0	—	—	0	—	—	—
Black or African American	—	—	21	—	—	19	—	—	—
Hispanic or Latino	X	✓	207	96%	X	188	156	167	161
Asian or Native Hawaiian/Other Pacific Islander	—	—	27	—	—	24	—	—	—
White	✓	✓	398	85%	✓	335	193	187	187
Multiracial	—	—	18	—	—	16	—	—	—
Students With Disabilities	X	✓	71	83%	X	61†	144†	154	148
Limited English Proficient	X	✓	58	98%	X	58‡	110‡	151	129
Economically Disadvantaged	X	✓	175	92%	X	151	148	169	156

Results for the following groups are NOT used to determine AYP.

Student Group	Students Enrolled During the Test Administration Period	Percent of Enrolled Students with Valid Test Scores	Tested Students Enrolled on BEDS Day	PI
Not American Indian or Alaska Native	671	89%	582	180
Not Black or African American	650	89%	563	181
Not Hispanic or Latino	464	86%	394	192
Not Asian or Native Hawaiian/Other Pacific Islander	644	89%	558	180
Not White	273	95%	247	163
Not Multiracial	653	89%	566	180
General Education	600	90%	525	185
English Proficient	613	88%	532	188
Not Economically Disadvantaged	496	88%	431	192
Male	348	92%	308	177
Female	323	87%	274	184
Migrant	0	—	0	—
Not Migrant	671	89%	582	180

✓ Yes

X No

— There were fewer than 40 students enrolled during the test administration period, so the Percent of Enrolled Students with Valid Test Scores data are suppressed OR there were fewer than 30 tested students enrolled on BEDS day and during the test administration period, so the PI, EAMO, and Progress Target data are suppressed.

† Includes former students with disabilities because the number of students with disabilities in the current year is equal to or greater than 30.

‡ Includes former limited English proficient students because the number of limited English proficient students in the current year is equal to or greater than 30.

## Secondary-Level English Language Arts Results for Accountability

All accountability groups made AYP: YES

Student Group	Made AYP	Tested 95%	12th Graders	Percent of 12th Graders with Valid Test Scores	PI >= EAMO or Safe Harbor Target	2011 Accountability Cohort Members	PI	EAMO	Safe Harbor Target
All Students	✓	✓	298	100%	✓	296	175	164	164
American Indian or Alaska Native	—	—	1	—	—	1	—	—	—
Black or African American	—	—	12	—	—	11	—	—	—
Hispanic or Latino	✓	✓	65	98%	✓	65	149	142	142
Asian or Native Hawaiian/Other Pacific Islander	—	—	14	—	—	15	—	—	—
White	✓	✓	204	100%	✓	202	184	173	173
Multiracial	—	—	2	—	—	2	—	—	—
Students With Disabilities	—	—	23	—	—	25	—	—	—
Limited English Proficient	—	—	4	—	—	8	—	—	—
Economically Disadvantaged	✓	✓	65	98%	✓	65	151	145	127

Results for the following groups are NOT used to determine AYP.

Student Group	12th Graders	Percent of 12th Graders with Valid Test Scores	2011 Accountability Cohort Members	PI
Not American Indian or Alaska Native	297	100%	295	175
Not Black or African American	286	100%	285	176
Not Hispanic or Latino	233	100%	231	183
Not Asian or Native Hawaiian/Other Pacific Islander	284	100%	281	175
Not White	94	99%	94	156
Not Multiracial	296	100%	294	175
General Education	275	100%	271	180
English Proficient	294	100%	288	179
Not Economically Disadvantaged	233	100%	231	182
Male	143	99%	143	167
Female	155	100%	153	183
Migrant	0	—	0	—
Not Migrant	298	100%	296	175

✓ Yes

X No

— There were fewer than 40 12th graders, so the Percent of 12th Graders with Valid Test Scores data are suppressed OR there were fewer than 30 students in the 2011 accountability cohort, so PI, EAMO, and Safe Harbor Target data are suppressed.

## Secondary-Level Mathematics Results for Accountability

All accountability groups made AYP: YES

Student Group	Made AYP	Tested 95%	12th Graders	Percent of 12th Graders with Valid Test Scores	PI >= EAMO or Safe Harbor Target	2011 Accountability Cohort Members	PI	EAMO	Safe Harbor Target
All Students	✓	✓	298	100%	✓	296	161	148	148
American Indian or Alaska Native	—	—	1	—	—	1	—	—	—
Black or African American	—	—	12	—	—	11	—	—	—
Hispanic or Latino	✓	✓	65	100%	✓	65	126	121	121
Asian or Native Hawaiian/Other Pacific Islander	—	—	14	—	—	15	—	—	—
White	✓	✓	204	100%	✓	202	174	158	158
Multiracial	—	—	2	—	—	2	—	—	—
Students With Disabilities	—	—	23	—	—	25	—	—	—
Limited English Proficient	—	—	4	—	—	8	—	—	—
Economically Disadvantaged	✓	✓	65	100%	✓	65	122	126	121

Results for the following groups are NOT used to determine AYP.

Student Group	12th Graders	Percent of 12th Graders with Valid Test Scores	2011 Accountability Cohort Members	PI
Not American Indian or Alaska Native	297	100%	295	161
Not Black or African American	286	100%	285	163
Not Hispanic or Latino	233	100%	231	171
Not Asian or Native Hawaiian/Other Pacific Islander	284	100%	281	161
Not White	94	100%	94	135
Not Multiracial	296	100%	294	161
General Education	275	100%	271	167
English Proficient	294	100%	288	164
Not Economically Disadvantaged	233	100%	231	173
Male	143	100%	143	158
Female	155	100%	153	165
Migrant	0	—	0	—
Not Migrant	298	100%	296	161

✓ Yes

X No

— There were fewer than 40 12th graders, so the Percent of 12th Graders with Valid Test Scores data are suppressed OR there were fewer than 30 students in the 2011 accountability cohort, so PI, EAMO, and Safe Harbor Target data are suppressed.

## Unweighted Combined ELA and Math PIs

Student Group	Elementary/ Middle-Level ELA PI	Elementary/ Middle-Level Math PI	Secondary-Level ELA PI	Secondary-Level Math PI	Unweighted Combined PI
All Students	124	141	175	161	150
American Indian or Alaska Native	—	—	—	—	—
Black or African American	84	93	—	—	89
Hispanic or Latino	78	95	149	126	112
Asian or Native Hawaiian/Other Pacific Islander	141	169	—	—	155
White	144	162	184	174	166
Multiracial	148	172	—	—	160
Students With Disabilities	66	76	—	—	71
Limited English Proficient	44	55	—	—	50
Economically Disadvantaged	72	88	151	122	108

— There were not enough students to determine a Performance Index.

# Overall Graduation Rate for Accountability

All accountability groups made AYP: NO

Student Group	Made AYP
All Students	✓
American Indian or Alaska Native	—
Black or African American	—
Hispanic or Latino	X
Asian or Native Hawaiian/Other Pacific Islander	—
White	✓
Multiracial	—
Students With Disabilities	✓
Limited English Proficient	—
Economically Disadvantaged	✓

✓ Made AYP  
X Did not make AYP  
— There were not enough students to make an AYP determination.

## Four-Year Graduation-Rate Total Cohort for Accountability

Student Group	Met Graduation-Rate Criterion	2010 Four-Year Graduation-Rate Total Cohort	Graduation Rate	State Standard	Progress Target
All Students	✓	324	91%	80%	80%
American Indian or Alaska Native	—	0	—	—	—
Black or African American	—	28	—	—	—
Hispanic or Latino	X	76	70%	80%	74%
Asian or Native Hawaiian/Other Pacific Islander	—	9	—	—	—
White	✓	202	98%	80%	80%
Multiracial	—	9	—	—	—
Students With Disabilities	✓	35†	83%†	80%	67%
Limited English Proficient	—	15	—	—	—
Economically Disadvantaged	X	67	73%	80%	80%

✓ Graduation rate is equal to or greater than the State Standard or the group's Progress Target.

X Graduation rate is less than the State Standard and the group's Progress Target.

— There were fewer than 30 students in the cohort.

† Includes former students with disabilities because the number of students with disabilities in the current year is equal to or greater than 30.

Five-Year Graduation-Rate Total Cohort for Accountability

Student Group	Met Graduation-Rate Criterion	2009 Five-Year Graduation-Rate Total Cohort	Graduation Rate	State Standard	Progress Target
All Students	✓	362	92%	80%	80%
American Indian or Alaska Native	—	0	—	—	—
Black or African American	—	14	—	—	—
Hispanic or Latino	X	81	78%	80%	80%
Asian or Native Hawaiian/Other Pacific Islander	—	17	—	—	—
White	✓	245	97%	80%	80%
Multiracial	—	5	—	—	—
Students With Disabilities	X	40†	65%†	80%	75%
Limited English Proficient	—	21	—	—	—
Economically Disadvantaged	✓	57	86%	80%	80%

✓ Graduation rate is equal to or greater than the State Standard or the group's Progress Target.  
X Graduation rate is less than the State Standard and the group's Progress Target.  
— There were fewer than 30 students in the cohort.  
† Includes former students with disabilities because the number of students with disabilities in the current year is equal to or greater than 30.

## Graduation Rates for Non-AYP Groups for Accountability

Results for the following groups are NOT used to determine AYP.

Student Group	Four-Year Graduation-Rate Total Cohort		Five-Year Graduation-Rate Total Cohort	
	2010 Four-Year Graduation-Rate Total Cohort	Graduation Rate	2009 Five-Year Graduation-Rate Total Cohort	Graduation Rate
Not American Indian or Alaska Native	324	91%	362	92%
Not Black or African American	296	91%	348	92%
Not Hispanic or Latino	248	97%	281	96%
Not Asian or Native Hawaiian/Other Pacific Islander	315	90%	345	92%
Not White	122	79%	117	82%
Not Multiracial	315	90%	357	92%
General Education	291	92%	325	96%
English Proficient	309	95%	341	96%
Not Economically Disadvantaged	257	95%	305	93%
Male	165	87%	192	91%
Female	159	95%	170	94%
Migrant	0	—	0	—
Not Migrant	324	91%	362	92%

— There were fewer than 30 students in the cohort.

## Graduation Rates for Regents with Advanced Designation and CTE Endorsement for Accountability

Percentage of 2010 Graduation-Rate Total Cohort members who graduated as of August 31, 2014 with:

Regents Diploma with an Advanced Designation (This District)	Regents Diploma with an Advanced Designation (Statewide)	Percentage in This District Exceeded Statewide
48%	31%	YES